

MADE IN AUSTRALIA
37 Years

SPEEDFLOW

Australian Made Performance Hose Fittings

HOSE . FITTINGS . TOOLS
QUALITY . SERVICE

1983-2020

2020 Catalogue



CONTENTS

COMPANY INFORMATION	4	WELD ON'S, SPARES & COMPONENTS	32
100 SERIES HOSE & HOSE ENDS	6	Weld on Fittings, Male, Female & Special Purpose	32
100 Series Stainless Steel Braided Hose	6	Weld on Necks and Caps	33
120 Series Start-Lite® Hose	6	INLINE FILTERS & VALVES	34
100 Series Hose Ends	7	Inline Filters - 600 Micro Series	34
200 SERIES HOSE & ALLOY HOSE ENDS	8	Inline Filters - 601 Short Series	34
200 Series Teflon® Braided Hose	8	Inline Filters - 601 Metric & Check Valve Series	34
200 Series Teflon® Black Stainless Braided Hose	8	Inline Filters - 602 Long Series	35
200 Series Teflon® Braided Hose with PVC Cover	8	Inline Filters - 602 Metric Series	35
200 Series Aluminium Hose Ends	9	Individual Filter Components	36
400 SERIES HOSE & HOSE ENDS	10	Inline Filters - 603 Mega Series	37
400 Series Pushlock Hose	10	Inline Filters - Scavenge Filters	37
332 & 598 Series AQP® SOCKETLESS™ Hose	10	Check Valves, Blower Relief & Turbo Adapters	38
400 Series Hose Ends	11	Aluminium Ball Valves	38
BARRICADE HOSE & 411 SERIES HOSE ENDS	12	200 SERIES HOSE, HOSE ENDS & ADAPTERS	39
Gates Submersible Fuel Hose	12	200 Series Teflon® Braided Hose	39
411 Series Hose Ends	12	200 Series Teflon® Black Stainless Braided Hose	39
490 SERIES POWERSTEER HOSE & HOSE ENDS	13	200 Series Teflon® Braided Hose with PVC Cover	39
490 Series Powersteer Hose	13	200 Series Aluminium Hose Ends	40
490 Series Hose Ends	13	200 Series Steel Hose Ends	40
550 & 520 SERIES HOSE SYSTEMS	14	200 Series Female & Male Adapter Hose Ends	41
550 Series Teflon® Aramid Braided Hose	14	200 Series Banjo Hose Ends - Steel & Aluminium	42
550 Series Teflon® Stainless Steel Braided Hose	14	300 Series Banjo Bolts	42
550 Series Hose Ends	15	310 Series Banjo to Male Flare	42
550 Series Crimp Equipment	16	200 Series Male Flare Adapters	43
Mechanical Fuel Injection Hose	17	200 Series Male Flare Adapters	44
Fuel Injection Hose Ends	17	200 Series Male Flare Adapters	45
520 Series Hose Ends	18	Firesleeve	46
111 COVER & 150 SERIES COVER CLAMPS	19	Hose Cutters & Accessories	46
111 Series Stainless Steel Braided Cover	19	TOOLS, MERCHANDISE & ACCESSORIES	46
150 Series Hose Cover Clamps	19	Vice Jaws & Spanners	47
ALUMINIUM ADAPTERS & COMPONENTS	20	Washers & O-Rings	47
Female Swivel Adapters	20	Decals, Banners & T-Shirts	48
Female Swivel Adapters, Y Blocks and Tees	21	ASSEMBLY INSTRUCTIONS	48
Fuel Pump, Power Steer & Oil Flare Adapters	22	How to Assemble 100 & 120 Series Hose	48
EFI Adapters	23	How to Assemble 200 Series Hose	49
Aluminium Banjo's & Bolts	23	399 Series Restrictor Instructions	49
Carburettor Adapters	24	How to Assemble 400 Series Pushlock Hose	49
Carburettor Fuel Line Kits	24	How to Assemble 490 Series Power steering Hose	50
Metric Adapters	25	How to Install Firesleeve	50
BSPP Adapters	26	TECHNICAL INFORMATION	51
Tube Adapters, Nuts & Sleeves	26	AN/JIC Fitting Identification Chart	51
Male AN/JIC Adapters	27	NPT & BSP Fitting Identification Chart	51
Bulkhead Fittings & Accessories	27		
Reducers, Expanders, Extensions, Plugs & Caps	28		
O-Ring Port Adapters	29		
NPT Adapters	30		
NPT Adapters	31		

Teflon® is a registered trademark of DuPont.
Start-Lite® is a registered trademark of Eaton.



"WE KNOW THAT OUR PRODUCTS WORK, WE HAVE TESTED AND DEVELOPED OUR RANGE OVER 35+ YEARS IN ALL FORMS OF MOTORSPORTS AND PERFORMANCE VEHICLES. THIS IS WHY SPEEDFLOW IS THE MOST TRUSTED NAME IN HOSE & FITTINGS IN AUSTRALIA"
TRAVIS & SHAUN LIEFTING – SPEEDFLOW

Speedflow

Products 2020 catalogue is the celebration of 37 years of our brand, started from humble beginnings back in 1983 to producing world class fittings from our Taree NSW factory that employs in excess of 25 passionate staff, who take pride in manufacturing the 2500+ components it takes to create all of the part numbers contained within this catalogue, designed with the serious enthusiast in mind.

The Speedflow name has become synonymous with quality and performance in the hose fitting industry and is used in every facet of Motorsport from professional teams through to the weekend racers as well as other spectrums of the market such as the show car circuit, marine, industrial hydraulics and even the aviation sector.

Speedflow has evolved into a high-tech business that has been responsible for designing, developing and introducing some of the most unique components available in the performance fitting market today and are envied and copied by many of our competitors worldwide.

Our products are continually being improved and new items are being added to our range in keeping pace with new technologies and trends in the marketplace. This year's catalogue includes several new parts, along with many new adapters and new sizes to complete our range. Make sure to check them all out, you're sure to find a solution for plumbing your vehicle!

At Speedflow we believe in Quality and doing it right the first time and we ensure this by having full control over every aspect of the production process from the machining to polishing, anodising, assembly and packaging of every hose end and adaptor. 2020 also sees the continual upgrade and streamlining of our production equipment, we have our first robotic machine installed and producing parts, with more on the way along with other new equipment and anodising systems. All of this is aimed at improving our efficiencies to increase our production capabilities and ensure our quality stay's at the forefront of the industry.

We want to take this opportunity to thank all our staff, distributors and customers for supporting Speedflow Products and our Australian Made Hose Fittings for the last 37 years! We intend to service you with the highest quality products for many more to come!

Shaun & Travis Liewing

Directors
Speedflow Products Pty Ltd

*Proudly Made in Australia
Since 1983!*

Warranty Information

Speedflow Products Pty Ltd warrants that said products will be free from defects in materials and workmanship for 1 year from the date of original purchase, and this warranty is limited to repair or replacement of parts. This warranty shall not exceed the original purchase price of the goods, nor shall Speedflow Products Pty Ltd be responsible for special, incidental, or consequential damages. Any defective parts should be returned to the point where purchased for any warranty adjustment. In the event the customer cannot get satisfaction from the dealer, you may contact Speedflow Products Pty Ltd for return authorisation. Product must then be shipped postage prepaid, along with proof of purchase to Speedflow Products · 3-5 Coolabah Drive · Taree · NSW 2430 · Australia.
This warranty does not apply to any product subject to damage in transit, accident, misuse or abuse following date of original purchase.
Products in this catalogue are for use on off-road automotive, motorcycle and competition marine applications only.

Some items in this catalogue may not be in stock. Speedflow reserves the right to substitute products of equal quality for those actually photographed and represented in this catalogue.

Speedflow is a register trademark of Speedflow Products Pty Ltd. The Speedflow name cannot be used in any form without prior written consent. No part of this publication may be copied or reproduced in whole or part without prior written permission of the publisher.

Published by Speedflow Products Pty Ltd. Copyright 2020.

Printed in Australia.

COMPANY INFORMATION

Speedflow Products was founded in 1983 to manufacture premium quality performance hose fittings in Australia for the motorsport and automotive industry.

From our Taree, NSW factory, Speedflow have now been supplying products to the motorsport industry throughout Australia and the world with stockiest in: England, France, Italy, the Middle East, New Zealand, Indonesia and the USA!

Speedflow has invested in the latest technology with some of the most sophisticated CNC machinery including manufacturing CNC lathes of our own design specifically suited to producing top quality products. We now have in excess of 25 CNC machines as well as cutting edge anodising equipment, polishing machines and a host of other ancillary equipment required to manufacture the best quality fittings available!

We produce innovative, high quality products that are unique due to the one piece formed bends with a smooth radial flow that are stronger and more compact than any other on the market today!

These robust full flow fittings are not made the conventional way by brazing but are bent in specialised equipment to produce a compact solid one piece bend, which are as low and strong as a forged fitting but with the advantage of a swept full flow bend.

All other components are made from billet material, we use no castings or forging which means there are no hidden flaws and an appealing billet finish is achieved with superior physical shape. All aspects of manufacturing, from machining to packaging are done

from our factory to provide absolute control of every product through every process. Our skilled staff are an important asset to us, all of whom are local residents, some with 20 plus years of service!

We anodise all of our own products using a specialised hard coat anodising system for extra hard wearing properties and we are able to apply a decorative colour. All other companies will use a decorative coat process which does not provide the same level of protection compared to our hard coat system. We also provide custom anodising for any part in our range and now include our Black Series as a standard colour option.

Speedflow's steel range of fittings are plated with the Electroless Nickel Process, which offers a highly durable uniform coating providing a bright finish, high degree of corrosion resistance and a degree of lubricity to reduce galling problems associated with stainless steel.

Our 400m² sales & distribution centre is now completed, with dedicated storage for all our completed fittings, our entire hose stocks and raw aluminium stocks. This has allowed us to separate our sales and production offices to further improve efficiencies.

Speedflow has certainly delivered on our original goal to produce and supply the best quality products to the Australian market. With our ongoing research and development in the demanding high pressure motorsport environment and our continual growth of new products, Speedflow will continue to manufacture, supply and support the performance industry well into the future!



"WHEN I AM RUNNING 5 SECOND PASSES AT OVER 250MPH I RELY ON HAVING QUALITY COMPONENTS. THAT'S WHY I ONLY TRUST SPEEDFLOW AND THEIR RANGE OF AUSTRALIAN MADE PRODUCTS"

VICTOR BRAY - 6 TIME TOP DOORSLAMMER CHAMPION

Victor Bray



COMPANY INFORMATION

INNOVATIVE ENGINEERING

Speedflow have 30 plus years of research and development and have state of the art machinery to produce the worlds most compact and strongest hose ends and adapters. Our bends are as low and strong as forged fittings but with the advantage of a swept full flow bend.

Speedflow fittings are made from marine quality 6061 billet aluminium for strength, quality of finish, superior corrosion and fatigue resistance.

- **MADE IN AUSTRALIA SINCE 1983**
- **SUPERIOR DESIGN**
- **ONE PIECE FORMED BENDS**
- **COMPLETE RANGE -3 TO -20**
- **STRONGEST & MOST COMPACT**
 - **BILLET 6061 ALUMINIUM**
 - **METRIC, IMPERIAL, BSPP**
 - **CUTTER STYLE HOSE ENDS**
- **ROTATABLE AFTER ASSEMBLY**
 - **HARD COAT ANODISING**
 - **ENS COATED STEEL**
- **CHOICE OF MOTORSPORT PROFESSIONALS**



Speedflow's packaging on display at Autobarn Bundaberg.

CUSTOM ANODISING

Speedflow have an in house anodising program, and we have recently expanded our facility to give us more flexibility and capacity.

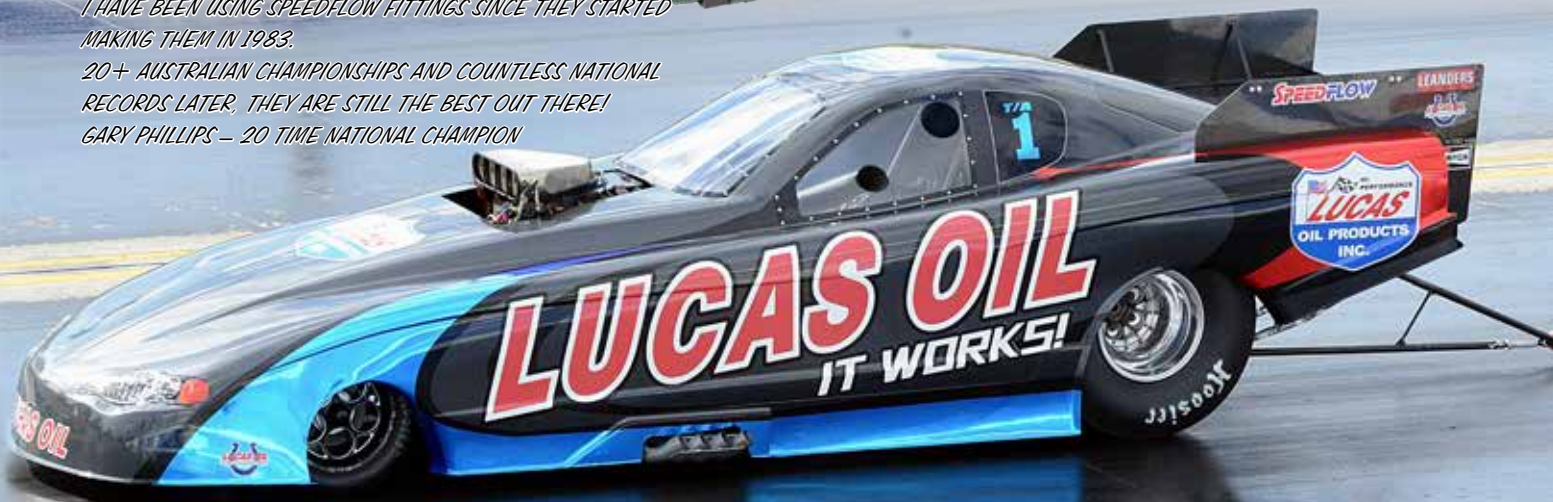
We have also expanded our colour range, now with the ability to custom anodise your fittings in a variety of common colours. Check out our colour range below which can be used in any combination, other colours are available by special order. For more information please contact your local supplier or distributor. A surcharge applies to custom anodising jobs.



Raw products have no protective coating to prevent corrosion.

I HAVE BEEN USING SPEEDFLOW FITTINGS SINCE THEY STARTED MAKING THEM IN 1983.

20+ AUSTRALIAN CHAMPIONSHIPS AND COUNTLESS NATIONAL RECORDS LATER, THEY ARE STILL THE BEST OUT THERE!
GARY PHILLIPS – 20 TIME NATIONAL CHAMPION



100 SERIES HOSE



100 SERIES STAINLESS STEEL BRAIDED HOSE

Speedflow 100 Series hose is the premier stainless steel nitrile hose. Manufactured specifically for the performance industry in the USA, this hose has been used by motorsport professionals all over Australia and the world! Designed for use with our wide variety of 100 Series hose ends to provide essential protection and resistance to high pressure, temperature, and chafing! It is constructed of a seamless synthetic nitrile inner tube with an integral stainless steel braid and a high tensile stainless steel outer braid. Speedflow's 100 Series hose has the highest corrosion and fire resistance of any other nitrile braided hose on the market. Suitable for use with synthetic lubricants, fuels*, oils, air, coolant and alcohol including methanol and nitromethane! *Check out the chart below for correct uses!

Temperature Range: -46°C (-50.8°F) to 150°C (302°F).

SIZE	PART NO.	INSIDE DIA.		OUTSIDE DIA.		OPERATING PRESS.		BURST PRESS.		WEIGHT		BEND RADIUS	
		INCH	MM	INCH	MM	PSI	BAR	PSI	BAR	KG/M	LB/FT	INCH	MM
-4	100-04	0.219	5.56	0.438	11.13	1000	69	6000	420	0.167	0.112	2.00	50.80
-6	100-06	0.344	8.73	0.547	13.89	1000	69	6000	420	0.201	0.135	2.50	63.50
-8	100-08	0.438	11.12	0.641	16.28	1000	69	5000	350	0.271	0.182	3.50	88.90
-10	100-10	0.562	14.27	0.797	20.24	1000	69	5000	350	0.348	0.234	4.00	101.60
-12	100-12	0.688	17.47	0.928	23.82	1000	69	3750	263	0.421	0.283	4.50	114.30
-16	100-16	0.875	22.22	1.156	29.36	750	52	2500	175	0.552	0.377	5.50	139.70
-20	100-20	1.125	28.70	1.437	36.49	500	35	2000	138	0.732	0.492	8.00	203.30



120 SERIES START-LITE® HOSE

The 120 Series hose is Lightweight, Durable and Race proven! Made from smooth-bore CPE liner with pre-dyed BLACK Nomex® cover. Start-Lite® hose assemblies are lighter in weight than conventional high performance assemblies. Use 100 Series reusable Hose Ends, no crimping machines or special tools are required! Applications: Fuel*, lube, coolant, air. *Check out the chart below for correct uses!

Temperature Range: -46°C (-50.8°F) to 150°C (302°F)

SIZE	PART NO.	INSIDE DIA.		OUTSIDE DIA.		OPERATING PRESS.		BURST PRESS.		WEIGHT		BEND RADIUS	
		INCH	MM	INCH	MM	PSI	BAR	PSI	BAR	KG/M	LB/FT	INCH	MM
-4	120-04	0.219	5.56	0.438	11.13	500	34	n/a	n/a	0.074	0.05	2.00	50.80
-6	120-06	0.344	8.73	0.547	13.89	500	34	n/a	n/a	0.119	0.08	2.50	63.50
-8	120-08	0.438	11.12	0.641	16.28	500	34	n/a	n/a	0.134	0.09	3.50	88.90
-10	120-10	0.562	14.27	0.797	20.24	500	34	n/a	n/a	0.209	0.14	4.00	101.60
-12	120-12	0.688	17.47	0.928	23.82	350	24	n/a	n/a	0.239	0.16	4.50	114.30
-16	120-16	0.875	22.22	1.156	29.36	350	24	n/a	n/a	0.283	0.19	5.50	139.70
-20	120-20	1.125	28.70	1.437	36.49	350	24	n/a	n/a	0.372	0.25	5.50	139.70

Teflon® & Nomex® are registered trademarks of DuPont.

Start-Lite® is a registered trademark of Eaton.

SELECTING THE RIGHT HOSE FOR THE APPLICATION!



Due to the introduction of new blends of unleaded fuels (ULP), Ethanol blends and fuel additives from all fuel manufacturers in recent years it has become increasingly difficult to assure the compatibility of these fuels with the current hose constructions.

The best hose option for use with petrol (gasoline) in our range is the 200 series Teflon® hose which can withstand all current additives used in the manufacture of ULP and Ethanol Blended fuels. 200 Series -6, -8 and -10 sizes are also manufactured with a carbon lining to prevent static build up and discharge from fast moving liquids.

The construction of the -6 and -8 100 series hose has been modified to be more compatible with unleaded fuels but due to the unpublished additives used by fuel companies we cannot guarantee the life of this hose with Unleaded and Ethanol Blends.

Below is a guide to uses of the 100 & 120 Series Hoses.

100 & 120 Series

Uses:
Compatibility:
Restrictions:

Fuel Systems (conditions apply), Coolant Systems & Oil Pressure Systems.

Methanol, Water, Oil & Fuel (see note below).

Not recommended for use with unleaded fuels and ethanol blends as it is known to allow the permeation of fuel smell through the layers as well as excessively reducing the life of the rubber compound.

Not to be used with brake fluids.

Not recommended for use around extreme heat sources such as turbochargers.

100 SERIES HOSE ENDS

100 SERIES HOSE ENDS

Speedflow is Australia's premier manufacturer of performance hose ends. Made from 6061 grade aluminium and utilising our unique full flow formed bend which is the strongest and most compact hose end bend in the industry! We only manufacture the cutter style which is engineered to securely fit our 100 & 120 Series hose for a perfect seal every time! All our hose ends can be rotated once assembled and are beautifully finished in a hard coat anodise with a decorative colour, either in standard red and blue or black. We can custom anodise to your specification.



STRAIGHT HOSE ENDS		
RED/BLUE	BLACK	SIZE
101-04	101-04-BLK	-4
101-06	101-06-BLK	-6
101-08	101-08-BLK	-8
101-10	101-10-BLK	-10
101-12	101-12-BLK	-12
101-16	101-16-BLK	-16
101-20	101-20-BLK	-20

30° HOSE ENDS		
RED/BLUE	BLACK	SIZE
107-04	107-04-BLK	-4
107-06	107-06-BLK	-6
107-08	107-08-BLK	-8
107-10	107-10-BLK	-10
107-12	107-12-BLK	-12
107-16	107-16-BLK	-16
107-20	107-20-BLK	-20

45° HOSE ENDS		
RED/BLUE	BLACK	SIZE
102-04	102-04-BLK	-4
102-06	102-06-BLK	-6
102-08	102-08-BLK	-8
102-10	102-10-BLK	-10
102-12	102-12-BLK	-12
102-16	102-16-BLK	-16
102-20	102-20-BLK	-20

60° HOSE ENDS		
RED/BLUE	BLACK	SIZE
108-04	108-04-BLK	-4
108-06	108-06-BLK	-6
108-08	108-08-BLK	-8
108-10	108-10-BLK	-10
108-12	108-12-BLK	-12
108-16	108-16-BLK	-16
108-20	108-20-BLK	-20



90° HOSE ENDS		
RED/BLUE	BLACK	SIZE
103-04	103-04-BLK	-4
103-06	103-06-BLK	-6
103-08	103-08-BLK	-8
103-10	103-10-BLK	-10
103-12	103-12-BLK	-12
103-16	103-16-BLK	-16
103-20	103-20-BLK	-20

120° HOSE ENDS		
RED/BLUE	BLACK	SIZE
104-04	104-04-BLK	-4
104-06	104-06-BLK	-6
104-08	104-08-BLK	-8
104-10	104-10-BLK	-10
104-12	104-12-BLK	-12
104-16	104-16-BLK	-16
104-20	104-20-BLK	-20

150° HOSE ENDS		
RED/BLUE	BLACK	SIZE
105-04	105-04-BLK	-4
105-06	105-06-BLK	-6
105-08	105-08-BLK	-8
105-10	105-10-BLK	-10
105-12	105-12-BLK	-12
105-16	105-16-BLK	-16
105-20	105-20-BLK	-20

180° HOSE ENDS		
RED/BLUE	BLACK	SIZE
106-04	106-04-BLK	-4
106-06	106-06-BLK	-6
106-08	106-08-BLK	-8
106-10	106-10-BLK	-10
106-12	106-12-BLK	-12
106-16	106-16-BLK	-16
106-20	106-20-BLK	-20



STEPPED SIZE 90° HOSE END			
RED/BLU	BLACK	HOSE	SIZE
103-12-10	103-12-10-BLK	-10	-12

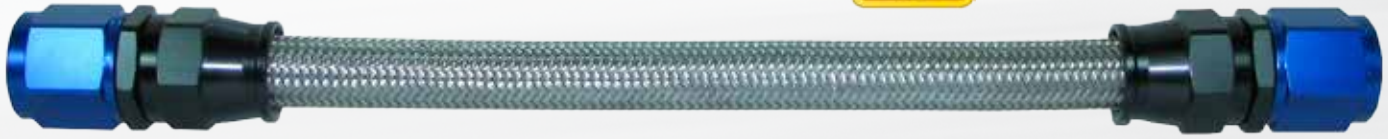
90° HOSE END TO MALE PORT		
RED/BLUE	BLACK	SIZE
103-P10-10	103-P10-10-BLK	-10
103-P12-12	103-P12-12-BLK	-12

BSPP HOSE ENDS			
RED	BLACK	HOSE	BSPP
121-08-08	121-08-08-BLK	-8	1/2"inv

200 SERIES HOSE



RECOMMENDED FUEL HOSE!



200 SERIES TEFLON® BRAIDED HOSE

Speedflow 200 Series Teflon® Braided Hose is constructed from a PTFE (Teflon®) inner tube compatible with all brake & clutch fluids, oil & fuels. The outer stainless steel braided cover adds fire and heat resistance and gives the hose a high pressure rating. Sizes -6 and up are manufactured with an anti-static PTFE tube suitable for use as main fuel lines. 200 Series has been an industry standard since the mid 60's when it was first used as brake lines to reduce expansion and provide a much firmer "pedal" and more consistent braking. Since then this hose has evolved to be recommended in clutch, pressure lines, turbo lines oil, water and fuel systems!

Temperature Range: -70°C (-94°F) to 260°C (500°F).

SIZE	PART NO.	INSIDE DIA.		OUTSIDE DIA.		OPERATING PRESS.		BURST PRESS.		WEIGHT		BEND RADIUS	
		INCH	MM	INCH	MM	PSI	BAR	PSI	BAR	KG/M	LB/FT	INCH	MM
-3	200-03	0.125	3.18	0.250	6.35	4250	290	12750	870	0.060	0.040	1.50	38.10
-4	200-04	0.188	4.78	0.312	7.92	4110	280	12350	840	0.075	0.050	2.00	50.80
-6	200-06	0.313	7.95	0.466	11.84	3380	230	10140	690	0.135	0.090	4.00	101.60
-8	200-08	0.415	10.54	0.526	13.35	2790	190	8380	570	0.149	0.100	5.25	133.40
-10	200-10	0.535	13.60	0.655	16.64	2200	150	6610	450	0.210	0.140	6.50	165.10
-12	200-12	0.625	15.88	0.860	21.84	1885	130	5655	390	0.280	0.188	8.00	203.30

**INDUSTRY FIRST
BLACK STAINLESS
BRAIDED HOSE**

200 SERIES TEFLON® BLACK STAINLESS BRAIDED HOSE

We now offer our popular 200 Series hose with a BLACK STAINLESS STEEL finish, in sizes -3 to -10. This is the identical hose to our 200 Series except we process in 5m lengths to change the outer braid from silver to BLACK! We supply from the factory in 5 metre lengths.

Temperature Range: -70°C (-94°F) to 260°C (500°F).

SIZE	PART NO.	LENGTH		INSIDE DIA.		OUTSIDE DIA.		OPERATING PRESS.		BURST PRESS.		BEND RADIUS	
		FEET	METRE	INCH	MM	INCH	MM	PSI	BAR	PSI	BAR	INCH	MM
-3	200-03-BLK-5M	16.4	5.0	0.125	3.18	0.250	6.35	4250	290	12750	870	1.50	38.10
-4	200-04-BLK-5M	16.4	5.0	0.188	4.78	0.312	7.92	4110	280	12350	840	2.00	50.80
-6	200-06-BLK-5M	16.4	5.0	0.313	7.95	0.466	11.84	3380	230	10140	690	4.00	101.60
-8	200-08-BLK-5M	16.4	5.0	0.415	10.54	0.526	13.35	2790	190	8380	570	5.25	133.40
-10	200-10-BLK-5M	16.4	5.0	0.535	13.60	0.655	16.64	2200	150	6610	450	8.00	203.30



200 SERIES TEFLON® BRAIDED HOSE WITH PVC COVER

Speedflow also offers our 200 Series Teflon® Braided Hose with a PVC cover. This abrasion resistant cover will stop the braid rubbing against other hoses, chassis or vehicle components and makes cleaning easier. Available in -3 with a Clear cover and -3 through -12 with a Gloss Black PVC cover.

Temperature Range: -70°C (-94°F) to 260°C (500°F).

SIZE	PART NO.	INSIDE DIA.		OUTSIDE DIA.		OPERATING PRESS.		BURST PRESS.		WEIGHT		BEND RADIUS	
		INCH	MM	INCH	MM	PSI	BAR	PSI	BAR	KG/M	LB/FT	INCH	MM
-3	200-03-C	0.125	3.18	0.295	7.49	4250	290	12750	870	0.070	0.047	1.50	38.10
-3	200-C03-BLK	0.125	3.18	0.295	7.49	4250	290	12750	870	0.070	0.047	1.50	38.10
-4	200-C04-BLK	0.188	4.78	0.366	9.30	4110	280	12350	840	0.085	0.057	2.00	50.80
-6	200-C06-BLK	0.313	7.95	0.500	12.70	3380	230	10140	690	0.155	0.104	4.00	101.60
-8	200-C08-BLK	0.415	10.54	0.594	15.09	2790	190	8380	570	0.170	0.115	5.25	133.40
-10	200-C10-BLK	0.535	13.60	0.740	18.80	2200	150	6610	450	0.230	0.154	6.50	165.10
-12	200-C12-BLK	0.625	15.88	0.860	21.84	1885	130	5655	390	0.300	0.201	8.00	203.30

200 SERIES HOSE ENDS

200 SERIES ALUMINIUM HOSE ENDS

Speedflow also manufactures a range of aluminium hose ends to suit the 200 Series hose for those who are conscious of weight. The aluminium range comes standard in black anodised. Our Blue/Black combination is also available along with custom anodising upon request.



STRAIGHT HOSE ENDS	
BLACK	SIZE
201-03-BLK	-3
201-04-BLK	-4
201-06-BLK	-6
201-08-BLK	-8
201-10-BLK	-10
201-12-BLK	-12



NEW SIZE

30° HOSE ENDS	
BLACK	SIZE
207-04-BLK	-4
207-06-BLK	-6
207-08-BLK	-8
207-10-BLK	-10
207-12-BLK	-12



45° HOSE ENDS	
BLACK	SIZE
202-03-BLK	-3
202-04-BLK	-4
202-06-BLK	-6
202-08-BLK	-8
202-10-BLK	-10
202-12-BLK	-12



NEW SIZE

60° HOSE ENDS	
BLACK	SIZE
208-04-BLK	-4
208-06-BLK	-6
208-08-BLK	-8
208-10-BLK	-10
208-12-BLK	-12



90° HOSE ENDS	
BLACK	SIZE
203-03-BLK	-3
203-04-BLK	-4
203-06-BLK	-6
203-08-BLK	-8
203-10-BLK	-10
203-12-BLK	-12



NEW SIZE

120° HOSE ENDS	
BLACK	SIZE
204-04-BLK	-4
204-06-BLK	-6
204-08-BLK	-8
204-10-BLK	-10
204-12-BLK	-12



NEW SIZE

150° HOSE ENDS	
BLACK	SIZE
205-04-BLK	-4
205-06-BLK	-6
205-08-BLK	-8
205-10-BLK	-10
205-12-BLK	-12



NEW SIZE

180° HOSE ENDS	
BLACK	SIZE
206-04-BLK	-4
206-06-BLK	-6
206-08-BLK	-8
206-10-BLK	-10
206-12-BLK	-12



CHECK OUT MORE 200 SERIES ON PG 39-42



400 SERIES HOSE



400 SERIES PUSHLOCK HOSE

Our 400 series hose is manufactured by Gates and designed specifically for 400 series pushlock style fittings. This hose has an elastomer tube with a smooth outer cover. This is not recommended for use with unleaded fuels or use in high pressure applications or suction systems. This hose suitable for use with synthetic lubricants, oils, air, coolant and methanol.

Temperature Range: -46°C (-50.8°F) to 100°C (212°F)

SIZE	PART NO. BLUE	PART NO. BLACK	INSIDE DIA.		OUTSIDE DIA.		OPERATING PRESS.		BURST PRESS.		WEIGHT		BEND RADIUS	
			INCH	MM	INCH	MM	PSI	BAR	PSI	BAR	KG/M	LB/FT	INCH	MM
-4	400-04	400-04-P	0.250	6.35	0.500	12.70	250	17	1000	69	0.10	0.07	3.00	76.20
-6	400-06	400-06-P	0.375	9.53	0.620	15.75	250	17	1000	69	0.16	0.11	3.00	76.20
-8	400-08	400-08-P	0.500	12.70	0.750	19.05	250	17	1000	69	0.22	0.15	5.00	127.00
-10	400-10	400-10-P	0.625	15.88	0.900	22.86	250	17	1000	69	0.30	0.20	6.00	152.40
-12	400-12	400-12-P	0.750	19.05	1.030	26.16	250	17	1000	69	0.36	0.24	7.00	177.80



332 & 598 SERIES AQP® SOCKETLESS™ HOSE

We have added the popular AQP® Socketless™ hose to our range. This hose has an elastomer tube, textile braid reinforcement with a rough elastomer outer cover. We do not recommend this hose for use with unleaded fuels or use in high pressure applications or suction systems. This hose suitable for use with synthetic lubricants, oils, air, coolant and methanol. 332 has a BLUE outer cover and the 598 is BLACK.

Temperature Range: -40°C (-40°F) to 100°C (212°F)

SIZE	PART NO. BLUE	PART NO. BLACK	INSIDE DIA.		OUTSIDE DIA.		OPERATING PRESS.		BURST PRESS.		WEIGHT		BEND RADIUS	
			INCH	MM	INCH	MM	PSI	BAR	PSI	BAR	KG/M	LB/FT	INCH	MM
-4	332-04	598-04	0.250	6.35	0.500	12.70	250	17	1000	69	0.10	0.07	3.00	76.20
-6	332-06	598-06	0.375	9.53	0.620	15.75	250	17	1000	69	0.16	0.11	3.00	76.20
-8	332-08	598-08	0.500	12.70	0.750	19.05	250	17	1000	69	0.22	0.15	5.00	127.00
-10	332-10	598-10	0.625	15.88	0.900	22.86	250	17	1000	69	0.30	0.20	6.00	152.40
-12	332-12	598-12	0.750	19.05	1.030	26.16	250	17	1000	69	0.36	0.24	7.00	177.80

AQP® and Socketless™ are registered trademarks of Eaton.

SELECTING THE RIGHT HOSE FOR THE APPLICATION!



Due to the introduction of new blends of unleaded fuels (ULP), Ethanol blends and fuel additives from all fuel manufacturers in recent years it has become increasingly difficult to assure the compatibility of these fuels with the current hose constructions. **The best hose option for use with petrol (gasoline) in our range is the 200 series Teflon® hose which can withstand all current additives used in the manufacture of ULP and Ethanol Blended fuels. 200 Series -6, -8 and -10 sizes are also manufactured with a carbon lining to prevent static build up and discharge from fast moving liquids.**

Below is a guide to uses of the 400, 332 & 598 Series Hoses.

332, 400, 598 Series

Uses:
Compatibility:
Restrictions:

Fuel lines (methanol only), Low Pressure/Temperature Oil Systems & Coolant Systems.
Methanol, Water & Oil.
Not recommended for use with unleaded fuels and ethanol blends as it is known to allow the permeation of fuel smell through the layers as well as excessively reducing the life of the rubber compound.
Not to be used with brake fluids.
Not recommended for use around extreme heat sources such as turbochargers.

400 SERIES HOSE ENDS

400 SERIES HOSE ENDS

Speedflow makes a complete range of 400 series hose ends to suit our 400, 332 & 598 Series hose. Made in Australia from 6061-T6 grade aluminium and utilising our unique full flow formed bend which is the strongest and most compact hose end bend in the industry! All our hose ends are beautifully finished in a hard coat anodise with a decorative colour, either in standard red and blue or black. We can custom anodise to your specification in a range of colours.



STRAIGHT HOSE ENDS		
RED/BLUE	BLACK	SIZE
401-04	401-04-BLK	-4
401-06	401-06-BLK	-6
401-08	401-08-BLK	-8
401-10	401-10-BLK	-10
401-12	401-12-BLK	-12



30° HOSE ENDS		
RED/BLUE	BLACK	SIZE
407-04	407-04-BLK	-4
407-06	407-06-BLK	-6
407-08	407-08-BLK	-8
407-10	407-10-BLK	-10
407-12	407-12-BLK	-12



45° HOSE ENDS		
RED/BLUE	BLACK	SIZE
402-04	402-04-BLK	-4
402-06	402-06-BLK	-6
402-08	402-08-BLK	-8
402-10	402-10-BLK	-10
402-12	402-12-BLK	-12



60° HOSE ENDS		
RED/BLUE	BLACK	SIZE
408-04	408-04-BLK	-4
408-06	408-06-BLK	-6
408-08	408-08-BLK	-8
408-10	408-10-BLK	-10
408-12	408-12-BLK	-12



90° HOSE ENDS		
RED/BLUE	BLACK	SIZE
403-04	403-04-BLK	-4
403-06	403-06-BLK	-6
403-08	403-08-BLK	-8
403-10	403-10-BLK	-10
403-12	403-12-BLK	-12



120° HOSE ENDS		
RED/BLUE	BLACK	SIZE
404-04	404-04-BLK	-4
404-06	404-06-BLK	-6
404-08	404-08-BLK	-8
404-10	404-10-BLK	-10
404-12	404-12-BLK	-12



150° HOSE ENDS		
RED/BLUE	BLACK	SIZE
405-04	405-04-BLK	-4
405-06	405-06-BLK	-6
405-08	405-08-BLK	-8
405-10	405-10-BLK	-10
405-12	405-12-BLK	-12



180° HOSE ENDS		
RED/BLUE	BLACK	SIZE
406-04	406-04-BLK	-4
406-06	406-06-BLK	-6
406-08	406-08-BLK	-8
406-10	406-10-BLK	-10
406-12	406-12-BLK	-12



SPEEDFLOW OFFERS A SPECIAL ORDER ANODISING SERVICE TO GIVE YOUR VEHICLE A COMPLETE CUSTOM LOOK! CALL FOR MORE INFO!



EFI HOSE & 411 SERIES HOSE ENDS



Gates BARRICADE FUEL INJECTION HOSE

- COVER:** Outstanding ozone and heat resistance
- REINFORCEMENT:** Textile spiral weave provides best-in-class working psi*
- ADHESION LAYER:** Serves as a second defense against oil and aggressive fuels
- GREENSHIELD® BARRIER:** Patent-pending thermoplastic material delivers the lowest permeation in the industry
- BARRIER TUBE:** Fortified to resist high heat and aggressive fuels such as Ethanol

Barricade Fuel Injection Hose

- Fuel injection engines, fuel lines, EEC/EGR, cars and light duty trucks
 - Air pump, PCV valve compatible with Gas/Diesel and Ethanol
 - Pressure rating: 225 psi (best-in-class)
 - Temperature: -40°F to 257°F (-40°C to 135°C) continuous, up to 302°F (150°C) intermittent

NOTE: DO NOT SUBMERSE IN FUEL

MODERN FUELS REQUIRE MODERN FUEL HOSE

Speedflow has a long relationship with the Gates Corporation in supplying the performance industry with their quality hoses to suit our range of fittings. We are excited to now stock the Gates premium range of Barricade fuel injection hose. Check out the information on this flyer about the outstanding performance of this standard replacement EFI fuel hose to meet the demands of modern fuel blends.

Installing Barricade protects the system against the aggressive fuel mixtures of today's modern fuels, which can degrade basic rubber hose and result in leaks and failure. Plus with Barricade, you can be assured that you are complying with permeation laws, and providing you with the best hose available – all while being environmentally-friendly.

- BEST-IN-CLASS working psi of 225 (for fuel injection)
- Lowest permeation rate on the market 1 gr/m2/day
- Multi-fuel compatible: Approved for use with leaded and unleaded Gasoline, Diesel, Biodiesel†, E-85, 100% Methanol, ETHANOL and gasohol fuels
- SAE R14 rating

*Barricade Fuel Injection has a best-in-class working pressure of 225 psi † Biodiesel fuel must meet the ASTM D6751 specification for biodiesel fuel and be produced, marketed and distributed by BQ9000 accredited facilities.

GATES BARRICADE EFI HOSE

SIZE	PER METER	25FT (7.62M) ROLL	250FT (76.2M) ROLL
1/4"	G27330	G27339	G27344
5/16"	G27331	G27340	G27345
3/8"	G27332	G27341	G27346
1/2"	G27333	G27342	-

Please check for availability of sizes and lengths, as stock is not always available.

GATES SUBMERSIBLE FUEL HOSE

Ordinary fuel line hose is designed to handle fuel on the inside only. The Gates Submersible Fuel Hose exceeds the SAE 30R10 rating and is capable of handling gasoline, alcohol-extended gasoline or diesel fuel in fully immersed, mobile, stationary and marine applications.

- Engineered for constant contact with gasoline (and other liquid petroleum distillates) on the inside and the outside.
- Excellent for use on fuel pumps in the gas tank.
- Meets the SAE 30R10 specification for submersible fuel line hose applications.
- Fluoroelastomer (FKM) tubed cover resists gas permeation and retards aging.
- Aramid Fiber reinforcement—the same fiber used in bulletproof vests and is pound-for-pound stronger than steel.
- Maximum temperature rating: +150°C.

GATES SUBMERSIBLE HOSE

SIZE	PER METER	50M ROLL
5/16"	G27010	G27014
3/8"	G27011	G27015

411 SERIES HOSE ENDS

411 Series Hose Ends are a push on hose end for use with standard style hose and a hose clamp for securing. As an example, these are great for adapting aftermarket pumps and fuel rails to standard fuel hose.



STRAIGHT HOSE ENDS

BLUE	BLACK	SIZE	HOSE
411-04-05	411-04-05-BLK	-4	5/16"
411-06-04	411-06-04-BLK	-6	1/4"
411-06-05	411-06-05-BLK	-6	5/16"
411-06	411-06-BLK	-6	3/8"
411-08-06	411-08-06-BLK	-8	3/8"
411-08	411-08-BLK	-8	1/2"



45° HOSE ENDS

BLUE	BLACK	SIZE	HOSE SIZE
412-06-05	412-06-05-BLK	-6	5/16"
412-06	412-06-BLK	-6	3/8"
412-08	412-08-BLK	-8	1/2"



90° HOSE ENDS

BLUE	BLACK	SIZE	HOSE SIZE
413-04-05	413-04-05-BLK	-4	5/16"
413-06-05	413-06-05-BLK	-6	5/16"
413-06	413-06-BLK	-6	3/8"
413-08	413-08-BLK	-8	1/2"

HOSE TAILS & POWERSTEER HOSE



METRIC HOSE TAILS		
BLACK	THREAD	SIZE
414-M10-05-BLK	M10 x 1.0	5/16"
414-M10-06-BLK	M10 x 1.0	3/8"
414-M10-08-BLK	M10 x 1.0	1/2"
414-M12-05-BLK	M12 x 1.5	5/16"
414-M12-06-BLK	M12 x 1.5	3/8"
414-M12-08-BLK	M12 x 1.5	1/2"
414-M14-05-BLK	M14 x 1.5	5/16"
414-M14-06-BLK	M14 x 1.5	3/8"
414-M14-08-BLK	M14 x 1.5	1/2"
414-M16-05-BLK	M16 x 1.5	5/16"
414-M16-06-BLK	M16 x 1.5	3/8"
414-M16-08-BLK	M16 x 1.5	1/2"
414-M18-05-BLK	M18 x 1.5	5/16"
414-M18-06-BLK	M18 x 1.5	3/8"
414-M18-08-BLK	M18 x 1.5	1/2"
414-M18-10-BLK	M18 x 1.5	5/8"

NPT HOSE TAILS		
BLACK	NPT	SIZE
421-01-04-BLK	1/16"	1/4"
421-02-03-BLK	1/8"	3/16"
421-02-04-BLK	1/8"	1/4"
421-02-05-BLK	1/8"	5/16"
421-02-06-BLK	1/8"	3/8"
421-04-05-BLK	1/4"	5/16"
421-04-06-BLK	1/4"	3/8"
421-06-05-BLK	3/8"	5/16"
421-06-06-BLK	3/8"	3/8"
421-06-08-BLK	3/8"	1/2"

Also available in Blue, remove -BLK from part number.

NEW SIZE

STRAIGHT JOINER	
BLACK	HOSE
411-505-06-BLK	5/16" to 3/8"
411-505-BLK	5/16"
411-506-BLK	3/8"
411-508-BLK	1/2"
411-510-BLK	5/8"
411-512-BLK	3/4"

NEW SIZE

O-RING PORT HOSE TAILS		
BLACK	PORT	SIZE
414-06-04-BLK	-6	1/4"
414-06-05-BLK	-6	5/16"
414-06-06-BLK	-6	3/8"
414-08-06-BLK	-8	3/8"
414-08-08-BLK	-8	1/2"
414-08-10-BLK	-8	5/8"
414-08-12-BLK	-8	3/4"
414-10-12-BLK	-10	3/4"

Also available in Blue, remove -BLK from part number.



IMPERIAL HOSE TAIL		
BLACK	THREAD	SIZE
414-04-05-BLK	7/16"-20	5/16"

This fitting is designed to screw into master cylinders to relocate the reservoir with a 5/16" brake hose.
Also available in Blue, remove -BLK from part number.



490 SERIES POWERSTEER HOSE

Speedflow's 490 Series hose is designed for high pressure power steering applications using our 490 Series fittings. The hose is constructed from a synthetic rubber tube with a textile inner braid, a single wire braid reinforcement and a rubber impregnated textile braid cover that is black in colour.
Temperature Range: -40°C (-40°F) to 121°C (250°F)

SIZE	PART NO.	INSIDE DIA.		OUTSIDE DIA.		OPERATING PRESS.		BURST PRESS.		WEIGHT		BEND RADIUS	
		INCH	MM	INCH	MM	PSI	BAR	PSI	BAR	KG/M	LB/FT	INCH	MM
-6	490-06	0.31	7.90	0.68	17.30	2250	157	9000	630	0.34	0.23	4.00	101.60
-8	490-08	0.41	10.40	0.77	19.60	1250	87	5000	350	0.23	0.43	1.75	44.50
-10	490-10	0.50	12.70	0.94	23.90	1250	87	5000	350	0.59	0.33	2.25	57.20

490 SERIES HOSE ENDS

Our 490 Series hose ends are made from 6061 grade aluminium and hard anodised black for a tough finish as required with power steering applications. These fittings are a non swivel tapered design hose end specially designed to suit our hose and tested to bursting pressures that surpass automotive power steering applications. Please consult assembly instructions for correct assembly procedures.



STRAIGHT HOSE ENDS	
BLACK	SIZE
491-06-BLK	-6
491-08-BLK	-8
491-10-BLK	-10

45° HOSE ENDS	
BLACK	SIZE
492-06-BLK	-6
492-08-BLK	-8
492-10-BLK	-10

90° HOSE ENDS	
BLACK	SIZE
493-06-BLK	-6
493-08-BLK	-8
493-10-BLK	-10

MANDREL TOOL	
PART NO.	DESCRIPTION
490-TOOL	-6 Assembly Assist

Insert the mandrel into the hose to help the installation of the hose end.

550 SERIES LIGHT WEIGHT

SF-Lite is the newest addition to the Speedflow range, and this is the most technologically advanced hose system available!

The hose has a carbon impregnated anti-static PTFE inner tube that is manufactured with a smooth-bore and convolutions on the outside which allows for improved flexibility. Being a smooth-bore hose, there are no voids that can create turbulence or trap debris as commonly found with a fully convoluted hose.

SF-Lite is available in six sizes from -4 to -16, all with a large bore size allowing greater volume to be carried at higher flow rates.

SF-Lite comes in a choice of two braid options, Aramid Fibre braid or Stainless Steel braid.

Aramid fibre braid is a strong, flexible and lightweight cover that has well-known characteristics of durability and extraordinary tensile strength along with a high temperature rating.

Stainless Steel braid is made from 304 stainless steel and offers a much tighter bend radius along with full vacuum rating below 130°C and protects the PTFE liner against internal pressure and mechanical abuse.

SF-Lite has an even higher resistance to permeation than a standard smooth-bore PTFE hose thanks to the unique manufacturing process which highly compresses the PTFE matrix ensuring a nonporous structure. This makes SF-Lite compatible with all automotive fluids including fuels such as E85 along with refrigeration gases making it perfect for AC lines.

SF-Lite utilises our new crimp system, and lightweight hose end series. The majority of the angled hose ends are made from our unique one piece formed bends that offer the most compact hose ends on the market with exceptional strength and allow us to achieve weights comparable to other industry leaders for light weight systems.



550 SERIES TEFLON® ARAMID BRAIDED HOSE

Speedflow's light weight system starts with a black antistatic smooth bore PTFE (Teflon®) liner tube manufactured with convolutions on the outside which makes for high flow with the flexibility of a tighter bend radius than our standard 200 Series hose. We offer our light weight hose with an Aramid Fibre Braid which is light weight, abrasion and heat resistant. The working pressure rating will reduce by 1% per 1°C at temps above 130°C up to a maximum of 180°. The manufacturer does not specify this as a Vacuum rated hose. For vacuum applications use the below Stainless Steel Braided version.

Temperature Range: -70°C (-94°F) to 180°C (356°F).

SIZE	PART NO.	INSIDE DIA.		OUTSIDE DIA.		OPERATING PRESS.		BURST PRESS.		WEIGHT		BEND RADIUS	
		INCH	MM	INCH	MM	PSI	BAR	PSI	BAR	KG/M	LB/FT	INCH	MM
-4	550-04	0.270	6.8	0.378	9.6	900	62	2750	190	0.056	0.038	1.50	38.0
-6	550-06	0.394	10.0	0.534	13.5	810	56	2500	172	0.095	0.065	2.00	50.8
-8	550-08	0.536	13.6	0.690	17.5	600	42	1850	127	0.135	0.090	3.00	76.2
-10	550-10	0.658	16.7	0.843	21.0	510	35	1550	106	0.215	0.145	4.00	101.6
-12	550-12	0.780	19.8	0.948	24.1	430	29	1260	86	0.250	0.165	5.00	127.0
-16	550-16	1.039	26.4	1.250	31.3	400	28	1200	83	0.370	0.250	6.00	152.4

Teflon® is a registered trademark of DuPont.



550 SERIES TEFLON® STAINLESS STEEL BRAIDED HOSE

The Stainless Steel braided version is made from the same liner as above, utilising a 304 Stainless Steel braid which provides more rigidity and flexibility, which is important when working in tight situations.

The working pressure rating will reduce by 1% per 1°C at temps above 160°C up to a maximum of 260°.

This hose is vacuum resistant up to 130° (266°F).

Temperature Range: -70°C (-94°F) to 180°C (356°F).

SIZE	PART NO.	INSIDE DIA.		OUTSIDE DIA.		OPERATING PRESS.		BURST PRESS.		WEIGHT		BEND RADIUS	
		INCH	MM	INCH	MM	PSI	BAR	PSI	BAR	KG/M	LB/FT	INCH	MM
-6	550-206	0.394	10.0	0.534	13.5	1160	80	3480	240	0.160	0.107	1.00	25.4
-8	550-208	0.536	13.6	0.690	17.5	870	60	2610	180	0.225	0.151	1.50	38.1
-10	550-210	0.658	16.7	0.843	21.0	730	50	2190	150	0.336	0.226	2.00	50.8
-12	550-212	0.780	19.8	0.948	24.1	610	42	1830	126	0.383	0.257	2.50	63.5
-16	550-216	1.039	26.4	1.250	31.3	580	40	1740	120	0.540	0.362	3.00	76.2

Teflon® is a registered trademark of DuPont.

550 SERIES LIGHT WEIGHT

550 SERIES HOSE ENDS

Here is the initial range of Speedflow's new 550 Series hose ends to suit our 550 Series hose. These hose ends are Made in Australia from 6061-T6 grade aluminium utilising our unique full flow formed bend* which is the strongest and most compact hose end bend in the industry! All hose ends come complete with a Natural crimp collar and are hard coat anodised in Black. Black crimp collars are sold seperately.



STRAIGHT HOSE ENDS	
BLK / NAT	SIZE
551-04	-4
551-06	-6
551-08	-8
551-10	-10
551-12	-12
551-16	-16



NEW SIZE

30° HOSE ENDS	
BLK / NAT	SIZE
557-04	-4
557-06	-6
557-08	-8
557-10	-10
557-12	-12
557-16	-16



45° HOSE ENDS	
BLK / NAT	SIZE
552-04	-4
552-06	-6
552-08	-8
552-10	-10
552-12	-12
552-16	-16



NEW SIZE

60° HOSE ENDS	
BLK / NAT	SIZE
558-04	-4
558-06	-6
558-08	-8
558-10	-10
558-12	-12
558-16	-16



90° HOSE ENDS	
BLK / NAT	SIZE
553-04	-4
553-06	-6
553-08	-8
553-10	-10
553-12	-12
553-16	-16



NEW SIZE

120° HOSE ENDS	
BLK / NAT	SIZE
554-04	-4
554-06	-6
554-08	-8
554-10	-10
554-12	-12
554-16	-16



NEW SIZE

150° HOSE ENDS	
BLK / NAT	SIZE
555-04	-4
555-06	-6
555-08	-8
555-10	-10
555-12	-12
555-16	-16



NEW SIZE

180° HOSE ENDS	
BLK / NAT	SIZE
556-04	-4
556-06	-6
556-08	-8
556-10	-10
556-12	-12
556-16	-16

* 120°, 150° & 180° angles in -10, -12 & -16 are made using a brazed tube design - not our one piece formed bend.



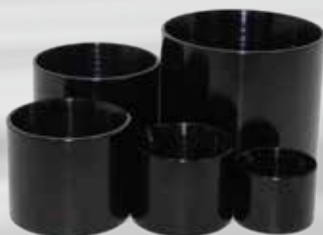
90° HOSE END TO ORB PORT	
BLK / NAT	SIZE
553-P12-12	-12

These have a -12 Port Thread to -12 Hose



BANJO HOSE END	
BLK / NAT	SIZE
720-55-06	-6

Banjo with 14.5mm Eye to suit 550-06 Hose



REPLACEMENT COLLARS		
NATURAL	BLACK	SIZE
C5500-04	C5500-04-BLK	-4
C5500-06	C5500-06-BLK	-6
C5500-08	C5500-08-BLK	-8
C5500-10	C5500-10-BLK	-10
C5500-12	C5500-12-BLK	-12
C5500-16	C5500-16-BLK	-16



550 SERIES LIGHT WEIGHT

550 SERIES CRIMP EQUIPMENT

To assemble our 550 Series hose ends, the assembly needs to be crimped to our sized specification. We offer an in house crimping service via our distributor network or you can purchase a crimping machine and corresponding dies to suit each size.



BJR
BRAD JONES RACING



Photo Courtesy of SMW Photography



John Zappa - Multi time Australian Champion and National Record Holder
Speedflow 550 Series Crimp System



Fabretti Racing - Doorslammer Champions
Speedflow 550 Series Crimp System

CRIMPING MACHINE	
PART NO.	STYLE
550-500	Stand Alone - Pneumatic Pump

The 550 Series Hose Crimpers are the "go anywhere" crimpers with the power and portability to quickly crimp the Speedflow 550 Series assemblies.

The micrometer style adjustment of the crimper allows the hose and fitting combinations to be crimped to exact specifications without the need for special shims or spacers.

The Stand Alone Hose Crimper offers the ultimate in portability, and utilises a separate pneumatic pump which requires a constant supply of 80psi air pressure.

Dies to suit hose sizes are sold separately so that you can purchase the sizes that you require.

Other crimpers are available by special order.



CRIMPING DIES		
PART NO.	SIZE	MIN DIA.
550-502	-2 Die Set	7mm
550-503	-3 Die Set	8mm
550-504	-4 Die Set	10mm
550-506	-6 Die Set	14mm
550-508	-8 Die Set	16mm
550-510	-10 Die Set	22mm
550-512	-12 Die Set	25mm
550-516	-16 Die Set	31mm

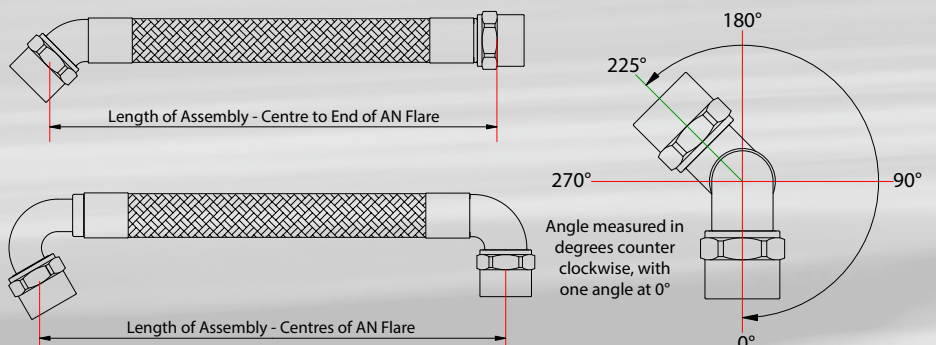
SPARES	
PART NO.	DESCRIPTION
550-500-01	Pusher
550-500-02	Compression Cone
550-500-03	Pressure Plate
We have these replacement parts available just in case you accidentally damage anything. We have also had customers use these with hydraulic presses to make their own crimping set up.	

MEASURING HOSE ASSEMBLIES LENGTH AND ORIENTATION

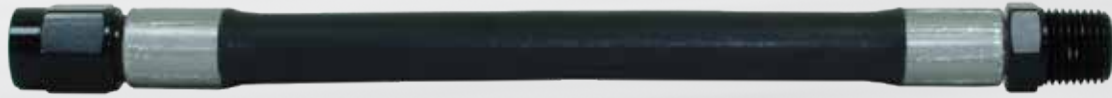
Below are some examples of how to measure the assemblies. The overall length is measured from the centre of the AN flare for angles and the end of the AN flare for straight hose ends. The angle orientation is measured in degrees from the centre line of the first fitting placed at 0° as per the diagram below. The measurement is taken in an Counter Clockwise direction as per the international standards.

Please contact your nearest dealer or the factory if you have any questions or require help in specifying the length or angles of your assemblies.

A order form is available from dealers to make your crimp hose assembly order much simpler.



MECHANICAL INJECTION LINES



MECHANICAL FUEL INJECTION HOSE

Our mechanical fuel injection hose is manufactured by Parker meeting the SAE 30R3 specification. This hose has a smooth outer cover with a fabric braided inner for strength and flexibility and a inner tube designed to withstand fuels.

This hose suitable for use with synthetic lubricants, oils, air and methanol.

Temperature Range: -40°C (-40°F) to 93°C (199°F).

SIZE	PART NO.	INSIDE DIA.		OUTSIDE DIA.		OPERATING PRESS.		BURST PRESS.		WEIGHT		BEND RADIUS	
		INCH	MM	INCH	MM	PSI	BAR	PSI	BAR	KG/M	LB/FT	INCH	MM
3/16"	550-900	0.1875	4.76	0.3600	9.14	500	34	1500	103	0.067	0.045	1.60	40.4

FUEL INJECTION HOSE ENDS

We have looked at the issues commonly found with mechanical injection lines, technology that has not changed in many decades! As pressures increase and flow is more critical than ever in high horsepower alcohol engines, failure of these lines has become more common.

Introducing the new Speedflow range of hose ends, these are lightweight, strong and high flowing! The 45° & 90° hose ends are a true flowed one piece formed bend allowing the best possible flow to the nozzle. We have male threaded hose ends also available in 3/8"-24 O-ring Port and NPT to give the option of screwing directly into the distribution blocks. The crimp collars are made from 6061-T6 aluminium and require a crimp machine to crimp to the correct diameter. We have pressure tested these hoses to exceed the burst pressure of the hose without the hose ends failing!

Manufactured in Australia from 6061-T6 aluminium and hard coat anodised to withstand the harsh environment these hoses encounter!



STRAIGHT HOSE ENDS	
BLK / NAT	SIZE
550-901	3/8" SAE
3/8" SAE Female (45° Flare) to suit Injection Nozzles	

45° HOSE ENDS	
BLK / NAT	SIZE
550-902	3/8" SAE
3/8" SAE Female (45° Flare) to suit Injection Nozzles	

90° HOSE ENDS	
BLK / NAT	SIZE
550-903	3/8" SAE
3/8" SAE Female (45° Flare) to suit Injection Nozzles	

MALE THREAD HOSE ENDS	
BLK / NAT	SIZE
550-911	3/8"-24 UNF
550-912	1/8"NPT

INJECTION HOSES MADE TO ORDER

Hoses are available crimped and ready to use from the factory, just supply the angle of the fittings required and a length - we take care of the rest! Contact your local dealer for more information.



200 SERIES CRIMP HOSE ENDS

520 SERIES HOSE ENDS

We have expanded our range of crimp style fittings to include hose ends that suit our 200 Series hose. This is an initial range of fittings that we have manufactured, with the range continuing to expand as we have demand for other fittings. Contact us if you have any special requirements.



STRAIGHT HOSE ENDS		
PART NO.	MATERIAL	SIZE
520-01-03-S	Steel	-3
520-01-04-S	Steel	-4
520-01-06	Aluminium	-6
520-01-08	Aluminium	-8

30° HOSE ENDS		
PART NO.	MATERIAL	SIZE
520-07-06	Aluminium	-6
520-07-08	Aluminium	-8

45° HOSE ENDS		
PART NO.	MATERIAL	SIZE
520-02-03-S	Steel	-3
520-02-04-S	Steel	-4
520-02-06	Aluminium	-6
520-02-08	Aluminium	-8

60° HOSE ENDS		
PART NO.	MATERIAL	SIZE
520-08-06	Aluminium	-6
520-08-08	Aluminium	-8



90° HOSE ENDS		
PART NO.	MATERIAL	SIZE
520-03-03-S	Steel	-3
520-03-04-S	Steel	-4
520-03-06	Aluminium	-6
520-03-08	Aluminium	-8

90° STEPPED HOSE END		
PART NO.	NUT	HOSE
520-03-43-S	-4	-3

120°, 150°, 180° HOSE ENDS		
PART NO.	ANGLE	SIZE
520-04-06	120°	-6
520-05-06	150°	-6
520-06-06	180°	-6

MALE - INVERTED SEAT		
PART NO.	SIZE	THREAD
520-50-03-S	-3	3/8"-24
520-51-03-S	-3	M10 x 1.00
520-52-03-S	-3	M10 x 1.25
520-54-03-S	-3	M12 x 1.00

Swivel Nut on inverted seat tube.



FEMALE - CONCAVE SEAT		
PART NO.	SIZE	THREAD
520-40-03-S	-3	M10 x 1.00
520-41-03-S	-3	M10 x 1.25
520-43-03-S	-3	M12 x 1.00

Long body with C-Clip Groove.

FEMALE - INVERTED SEAT		
PART NO.	SIZE	THREAD
520-70-03-S	-3	M12 x 1.50

FEMALE - CONCAVE SEAT		
PART NO.	SIZE	THREAD
520-42-03-BN	-3	3/8"-24

Designed to accept 3/8" Bleed Nipple for remote bleeding of Clutch or Brake systems.

FEMALE 1/8" NPT	
PART NO.	SIZE
520-74-03-F-S	-3



STRAIGHT 8mm EYE	
PART NO.	SIZE
520-09-03-S	-3

STRAIGHT 10mm (3/8") EYE	
PART NO.	SIZE
520-10-03-S	-3
520-10-04-S	-4

BENT 10MM (3/8") EYE		
PART NO.	SIZE	ANGLE
520-10-33-S	-3	30°
520-10-43-S	-3	45°
520-10-93-S	-3	90°

STRAIGHT 7/16" EYE	
PART NO.	SIZE
520-11-03-S	-3
520-11-04-S	-4

BRAIDED COVER & COVER CLAMPS



**INDUSTRY FIRST
BLACK STAINLESS
BRAIDED COVER**



111 SERIES STAINLESS STEEL BRAIDED COVER

We have this quality stainless steel braided cover in stock, great for covering radiator and heater hoses or any other hose for that matter! Available in several different sizes to suit a variety of hoses, simply slide the cover of the hose and clamp on each end with our hose cover clamps!

STAINLESS PART NO.	BLACK PART NO.	INSIDE DIA.		SUIT HOSE OUTSIDE DIA.		SUGGESTED APPLICATIONS
		INCH	MM	INCH	MM	
111-016	111-016-BLK-3M	0.63	16	0.55 - 0.63	14 - 16	Fuel Line, Overflow Hoses, Oil Lines
111-021	111-021-BLK-3M	0.83	21	0.67 - 0.83	17 - 21	Fuel Line, Overflow Hoses, Oil Lines
111-028	111-028-BLK-3M	1.10	28	0.83 - 1.10	21 - 28	Heater Hose, Power Steer and AC Lines
111-035	111-035-BLK-3M	1.38	35	1.10 - 1.38	29 - 35	Heater Hose, Power Steer and AC Lines
111-040	111-040-BLK-3M	1.57	40	1.38 - 1.57	36 - 40	Heater Hose, Power Steer and AC Lines
111-045	111-045-BLK-3M	1.77	45	1.57 - 1.77	40 - 45	Small Radiator Hoses
111-050	111-050-BLK-3M	1.97	50	1.77 - 1.97	45 - 50	Medium Radiator Hoses
111-060	111-060-BLK-3M	2.36	60	1.97 - 2.36	50 - 60	Large Radiator Hoses



150 SERIES HOSE COVER CLAMPS

The perfect way to finish off the end of a hose to give it the look and feel of a competition hose! Manufactured in a huge range of sizes from quality aluminium and then beautifully anodised to suit your application! Smaller sizes are machined from hex bar, with larger sizes from -16 and up machined round. Each fitting includes a stainless steel worm drive clamp to give a maximum working pressure of 50 psi.



INSIDE DIA.		100 SERIES HOSE SIZE	STYLE	RAW	BLUE	NATURAL	BLACK	RED
INCH	MM			PART NO.	PART NO.	PART NO.	PART NO.	PART NO.
0.50	12.70	-4	Hexagon	150-04-A	150-04-B	150-04-N	150-04-P	150-04-R
0.55	13.84		Hexagon	150-05-A	150-05-B	150-05-N	150-05-P	150-05-R
0.60	15.24	-6	Hexagon	150-06-A	150-06-B	150-06-N	150-06-P	150-06-R
0.65	16.46		Hexagon	150-07-A	150-07-B	150-07-N	150-07-P	150-07-R
0.69	17.53	-8	Hexagon	150-08-A	150-08-B	150-08-N	150-08-P	150-08-R
0.85	21.59	-10	Hexagon	150-10-A	150-10-B	150-10-N	150-10-P	150-10-R
0.98	24.89	-12	Hexagon	150-12-A	150-12-B	150-12-N	150-12-P	150-12-R
1.125	28.58		Hexagon	150-14-A	150-14-B	150-14-N	150-14-P	150-14-R
1.20	30.48	-16	Round	150-16-A	150-16-B	150-16-N	150-16-P	150-16-R
1.50	38.10	-20	Round	150-20-A	150-20-B	150-20-N	150-20-P	150-20-R
1.81	46.04		Round	151-20-A	151-20-B	151-20-N	151-20-P	151-20-R
1.94	49.21		Round	151-22-A	151-22-B	151-22-N	151-22-P	151-22-R
2.03	51.59		Round	151-24-A	151-24-B	151-24-N	151-24-P	151-24-R
2.09	53.18		Round	151-26-A	151-26-B	151-26-N	151-26-P	151-26-R
2.31	58.74		Round	151-28-A	151-28-B	151-28-N	151-28-P	151-28-R
2.38	60.33		Round	151-30-A	151-30-B	151-30-N	151-30-P	151-30-R

ALUMINIUM ADAPTERS

FEMALE SWIVEL ADAPTERS

We manufacture a large range of female swivel adapters to help join, adapt or split male fittings to any angle in any situation. Common uses for these are joining fuel pumps to tanks or filters, scavenge filters to sumps. The possibilities are endless!



STRAIGHT FEMALE - FEMALE

RED/BLUE	BLACK	SIZE
131-03	131-03-BLK	-3
131-04	131-04-BLK	-4
131-06	131-06-BLK	-6
131-08	131-08-BLK	-8
131-10	131-10-BLK	-10
131-12	131-12-BLK	-12
131-16	131-16-BLK	-16
131-20	131-20-BLK	-20

STEP SIZE FEMALE - FEMALE

RED/BLUE	BLACK	SIZE
131-06-08	131-06-08-BLK	-6 to -8
131-08-10	131-08-10-BLK	-8 to -10
131-10-12	131-10-12-BLK	-10 to -12

180° FEMALE - FEMALE

RED/BLUE	BLACK	SIZE
136-06	136-06-BLK	-6
136-08	136-08-BLK	-8
136-10	136-10-BLK	-10
136-12	136-12-BLK	-12

-10 & -12 are made with brazed tubes



45° FEMALE - FEMALE

RED/BLUE	BLACK	SIZE
132-03	132-03-BLK	-3
132-04	132-04-BLK	-4
132-06	132-06-BLK	-6
132-08	132-08-BLK	-8
132-10	132-10-BLK	-10
132-12	132-12-BLK	-12
132-16	132-16-BLK	-16

90° FEMALE - FEMALE

RED/BLUE	BLACK	SIZE
133-03	133-03-BLK	-3
133-04	133-04-BLK	-4
133-06	133-06-BLK	-6
133-08	133-08-BLK	-8
133-10	133-10-BLK	-10
133-12	133-12-BLK	-12
133-16	133-16-BLK	-16

45° FEMALE - MALE

RED/BLUE	BLACK	SIZE
142-03	142-03-BLK	-3
142-04	142-04-BLK	-4
142-06	142-06-BLK	-6
142-08	142-08-BLK	-8
142-10	142-10-BLK	-10
142-12	142-12-BLK	-12
142-16	142-16-BLK	-16

90° FEMALE - MALE

RED/BLUE	BLACK	SIZE
143-03	143-03-BLK	-3
143-04	143-04-BLK	-4
143-06	143-06-BLK	-6
143-08	143-08-BLK	-8
143-10	143-10-BLK	-10
143-12	143-12-BLK	-12
143-16	143-16-BLK	-16



MALE - MALE 1/8" NPT PORT

RED/BLUE	BLACK	SIZE
140-206	140-06-BLK	-6
140-208	140-08-BLK	-8
140-210	140-10-BLK	-10
140-212	140-12-BLK	-12

These have an 1/8" NPT Female Port

FEMALE - MALE 1/8" NPT PORT

RED/BLUE	BLACK	SIZE
140-03	140-03-BLK	-3
140-04	140-04-BLK	-4
140-06	140-06-BLK	-6
140-08	140-08-BLK	-8
140-10	140-10-BLK	-10
140-12	140-12-BLK	-12
140-16	140-16-BLK	-16

These have an 1/8" NPT Female Port

FEMALE - MALE 1/8" NPT PORT

PART NO.	SIZE	MATERIAL
140-03-S	-3	Steel
140-04-02-S	-4	Steel

FEMALE - MALE 1/4" NPT PORT

RED/BLUE	BLACK	SIZE
140-04-04	140-04-04-BLK	-4
140-06-04	140-06-04-BLK	-6

These have an 1/4" NPT Female Port



FEMALE - MALE M10 PORT

PART NO.	SIZE	MATERIAL
140-03-M10-S	-3	Steel

An inline tee with an M10 x 1.0 thread and concave seat to accept Bosch senders or other M10 fittings. Sender not included.

ALUMINIUM ADAPTERS

FEMALE SWIVEL ADAPTERS, Y BLOCKS AND TEES

We introduced the 146 Series over 10 years ago, and is still one of the most popular billet fittings in our range! These handy Y blocks and tees are great for fuel systems when joining two pumps, but this is just the beginning of their uses. Made in Australia with pride!



FEMALE - MALE STEP Y			
RED/BLUE	BLACK	FEM	MALE
146-08-06	146-08-06-BLK	-8	-6
146-10-08	146-10-08-BLK	-10	-8
146-12-10	146-12-10-BLK	-12	-10



NEW SIZE FEMALE - MALE Y			
RED/BLUE	BLACK	FEM	MALE
147-04	147-04-BLK	-4	2 x -4
147-06	147-06-BLK	-6	2 x -6
147-08	147-08-BLK	-8	2 x -8
147-10	147-10-BLK	-10	2 x -10
147-12	147-12-BLK	-12	2 x -12



NEW SIZE MALE Y		
BLUE	BLACK	MALE
147-304	147-304-BLK	-3
147-306	147-306-BLK	-6
147-308	147-308-BLK	-8
147-310	147-310-BLK	-10
147-312	147-312-BLK	-12



FEMALE PORT - MALE Y		
BLACK	PORT	MALE
147-P08-08-BLK	-8	-8

Also available in BLUE remove -BLK from Part No.



TEE - FEMALE ON BRANCH		
BLUE	BLACK	SIZE
144-03	144-03-BLK	-3
144-04	144-04-BLK	-4
144-06	144-06-BLK	-6
144-08	144-08-BLK	-8
144-10	144-10-BLK	-10
144-12	144-12-BLK	-12



TEE - FEMALE ON RUN		
BLUE	BLACK	SIZE
145-03	145-03-BLK	-3
145-04	145-04-BLK	-4
145-06	145-06-BLK	-6
145-08	145-08-BLK	-8
145-10	145-10-BLK	-10
145-12	145-12-BLK	-12



TEE - FEMALE ON RUN		
PART NO.	MATERIAL	SIZE
145-03-S	Steel	-3



AN FEMALE TO NPT MALE		
PART NO.	MATERIAL	SIZE
906-03-02-S	Steel	-3 1/8"NPT



NEW SIZE FEMALE TEE MALE ON BRANCH		
BLUE	BLACK	SIZE
144-206	144-206-BLK	-6
144-208	144-208-BLK	-8



NEW SIZE FEMALE SWIVEL TEE		
BLUE	BLACK	SIZE
144-306	144-306-BLK	-6
144-308	144-308-BLK	-8



NEW SIZE FEMALE TEE MALE ON RUN		
BLUE	BLACK	SIZE
144-406	144-406-BLK	-6
144-408	144-408-BLK	-8



AN FEMALE TO NPT MALE		
BLACK	SIZE	MALE
906-04-02-BLK	-4	1/8"NPT
906-06-04-BLK	-6	1/4"NPT
906-06-06-BLK	-6	3/8"NPT
906-08-06-BLK	-8	3/8"NPT
906-10-08-BLK	-10	1/2"NPT

Also available in BLUE remove -BLK from Part No.



STEEL FEMALE - FEMALE		
PART NO.	ANGLE	SIZE
131-03-S	Straight	-3
132-03-S	45°	-3
133-03-S	90°	-3
133-04-S	90°	-4



STEEL FEMALE - MALE		
PART NO.	ANGLE	SIZE
142-03-S	45°	-3
143-03-S	90°	-3



FEMALE TO O-RING PORT		
BLACK	FEMALE	PORT
906-P06-06-BLK	-6	-6
906-P08-08-BLK	-8	-8
906-P10-10-BLK	-10	-10
906-P12-12-BLK	-12	-12



FEMALE TO METRIC MALE		
BLACK	FEMALE	MALE
906-08-M14-BLK	-8	M14 x 1.5
906-08-M18-BLK	-8	M18 x 1.5
906-10-M18-BLK	-10	M18 x 1.5

ALUMINIUM ADAPTERS

FUEL PUMP, POWER STEER & OIL FLARE ADAPTERS

We manufacture a full range of adapters to suit standard fuel pumps, filters, transmission adapters, power steering pumps and racks along with other specialised adapters to suit a wide variety of automotive applications.



METRIC INVERTED FLARE		
PART NO.	SIZE	SIZE
704-M16-06-BLK	-6	M16 x 1.5
704-M17-06-BLK	-6	M17 x 1.5



FUEL LINES		
PART NO.	SIZE	THREAD
702-06-BLK	-6	7/16"-24 Inv

Also available in BLUE remove -BLK from Part No.



TRANSMISSION & FUEL LINES		
PART NO.	SIZE	THREAD
703-06-BLK	-6	1/2"-20 Inv
703-08-BLK	-8	1/2"-20 Inv

Also available in BLUE remove -BLK from Part No.



POWER STEER, FUEL & OIL		
PART NO.	SIZE	THREAD
704-06-BLK	-6	5/8"-18 Inv
704-08-BLK	-8	5/8"-18 Inv

Also available in BLUE remove -BLK from Part No.



POWER STEER LINES			
BLUE	BLACK	SIZE	THREAD
705-06	705-06-BLK	-6	11/16"-18 Inv



CARTER CARBURETTOR			
BLUE	BLACK	SIZE	THREAD
706-06	706-06-BLK	-6	5/8"-20 Washer



CHRYSLER OIL ADAPTER			
BLUE	BLACK	SIZE	THREAD
707-10	707-10-BLK	-10	3/4"-18 Inv



GM GEARBOX ADAPTER			
BLUE	BLACK	SIZE	THREAD
816-06-NPS	816-06-NPS-BLK	-6	1/4"NPS

Suits most late model TH350, TH400 and TH700R. Earlier model use a 1/4"NPT (816 series)



90° TRANSMISSION ADAPTER		
BLACK	SIZE	SUIT
922-6R-08-BLK	-8	6R Transmission
922-ZF-08-BLK	-8	ZF Transmission



PUSH IN OIL ADAPTER		
BLACK	SIZE	STYLE
708-10-50-BLK	-10	1" Press Fit
708-12-50-BLK	-12	1" Press Fit

Press fit adapter for valve covers with 1" (25.4mm) ID rubber grommets.



METRIC OIL SENDER ADAPTER		
BLACK	PORT	THREAD
810-M12-02-BLK	1/8"NPT	M12 x 1.5
810-M14-02-BLK	1/8"NPT	M14 x 1.5
810-M16-02-BLK	1/8"NPT	M16 x 1.5

For use of the standard sender and aftermarket gauges. Three outlets with two plugs supplied. M12, M14 & M16!



PUSH IN OIL ADAPTER - SUIT NISSAN		
BLACK	SIZE	STYLE
708-08-01-BLK	-8	RB20/25 Press Fit
708-08-02-BLK	-8	SR20 Press Fit
708-10-01-BLK	-10	RB20/25 Press Fit
708-10-02-BLK	-10	SR20 Press Fit
708-10-03-BLK	-10	RB26 Press Fit
708-12-03-BLK	-12	RB26 Press Fit

Press fit adapter to suit Nissan valve covers to replace the standard steel breather adapter.



VALVE COVER ADAPTER - SUIT NISSAN		
BLACK	SIZE	STYLE
708-10-M19-BLK	-10	RB30 Screw In

Screw in adapter to suit Nissan valve covers with a threaded hole. Will also fit some SR20.

ALUMINIUM ADAPTERS

EFI ADAPTERS

At Speedflow we are always improving and extending on our range to suit new applications such as a full range of EFI fittings to convert standard OEM fuel rails, tanks or fuel lines to a AN/JIC adapter.



GM EFI ADAPTERS			
BLUE	BLACK	TUBE	SIZE
715-06-05	715-06-05-BLK	5/16"	-6
715-06-06	715-06-06-BLK	3/8"	-6
715-08-06	715-08-06-BLK	3/8"	-8
715-06-08	715-06-08-BLK	1/2"	-6
715-08-08	715-08-08-BLK	1/2"	-8

GM EFI TUBE ADAPTERS			
BLUE	BLACK	TUBE	SIZE
716-06-05	716-06-05-BLK	5/16"	-6
716-06-06	716-06-06-BLK	3/8"	-6
716-08-06	716-08-06-BLK	3/8"	-8

FORD EFI FUEL PRESSURE			
BLUE	BLACK	SIZE	THREAD
816-04-01	816-04-01-BLK	-4	1/16"NPT

ALUMINIUM BANJO'S & BOLTS

We manufacture a full range of Banjo Bolts to suit our 14.5mm eye and new 16 & 18mm Banjo's. Common uses include oil lines, fuel pumps, filters and carburetors, EFI & power steering.



BANJO 14.5mm EYE	
STEEL	SIZE
720-04-S	-4

BANJO 14.5mm EYE		
RED	BLACK	SIZE
720-04	720-04-BLK	-4
720-06	720-06-BLK	-6

DOUBLE BANJO 14.5mm EYE		
RED	BLACK	SIZE
721-06	721-06-BLK	2 x -6 Males



METRIC BOLTS		
BLACK	THREAD	SUITS
723-06-BLK	M12 x 1.25	Dellorto
724-06-BLK	M12 x 1.5	Weber, Bosch
725-05-BLK	M14 x 1.25	Pumps, Filters
725-06-BLK	M14 x 1.5	Bosch, Turbo

IMPERIAL BOLTS			
BLUE	BLACK	THREAD	SUITS
722-06	722-06-BLK	9/16"-24	Holley Carb
727-06	727-06-BLK	1/2"-20	CAV Filters
728-06	728-06-BLK	9/16"-18	General

BSPP BOLT			
RED	BLACK	THREAD	SUITS
726-06	726-06-BLK	1/4"BSPP	Lucas Inj



BANJO 16mm EYE		
RED	BLACK	SIZE
720-M16-06	720-M16-06-BLK	-6
720-M16-08	720-M16-08-BLK	-8
720-M16-10	720-M16-10-BLK	-10

BANJO 18mm EYE		
RED	BLACK	SIZE
720-M18-08	720-M18-08-BLK	-8
720-M18-10	720-M18-10-BLK	-10

METRIC BOLTS		
BLACK	THREAD	SUITS
725-M16-BLK	M16 x 1.5	General
725-M18-BLK	M18 x 1.5	General

ALUMINIUM ADAPTERS

CARBURETTOR ADAPTERS

We have redesigned these adapters to suit a wider variety of carburettors including Holley, Demon, Quick Fuel Technology plus other carburettors. The new Speedflow design will eliminate clearance issues that some carburettors encounter with certain styles of adapters!



HOLLEY DUAL FEED			
BLUE	BLACK	THREAD	SIZE
700-06	700-06-BLK	7/8"-20	-6

HOLLEY DUAL FEED			
BLUE	BLACK	THREAD	SIZE
700-08	700-08-BLK	7/8"-20	-8

HOLLEY & DEMON			
BLUE	BLACK	THREAD	SIZE
701-06	701-06-BLK	9/16"-24	-6

HOLLEY & DEMON			
BLUE	BLACK	THREAD	SIZE
701-08	701-08-BLK	9/16"-24	-8



HOLLEY DUAL FEED			
BLUE	BLACK	THREAD	SIZE
700-08-L	700-08-L-BLK	7/8"-20	-8

HOLLEY DUAL FEED - FEMALE			
BLUE	BLACK	THREAD	SIZE
710-06	710-06-BLK	7/8"-20	-6
710-08	710-08-BLK	7/8"-20	-8

HOLLEY & DEMON			
BLUE	BLACK	THREAD	SIZE
701-08-L	701-08-L-BLK	9/16"-24	-8

HOLLEY & DEMON			
BLUE	BLACK	THREAD	SIZE
711-06	711-06-BLK	9/16"-24	-6
711-08	711-08-BLK	9/16"-24	-8



HOLLEY FEMALE - SHORT			
BLUE	BLACK	THREAD	SIZE
710-06-01	710-06-01-BLK	7/8"-20	-6

This measures 70mm OAL, 18mm shorter than 710-06

HOLLEY HP & QFT DUAL FEED			
BLUE	BLACK	THREAD	SIZE
920-06-08	920-06-08-BLK	3/4"-16	-6
920-08	920-08-BLK	3/4"-16	-8

HOLLEY HP & QFT DUAL FEED			
BLUE	BLACK	THREAD	SIZE
920-06-08-L	920-06-08-L-BLK	3/4"-16	-6
920-08-L	920-08-L-BLK	3/4"-16	-8

CARBURETTOR FUEL LINE KITS

Speedflow's popular carburettor kits are available to suit Holley, Demon, Quick Fuel Technology and other branded carburettors. We have a choice of hose styles including our new 200 Series kits, 100 Series Braided and 120 Series Start-Lite®. We have Red & Blue or Black fittings as a standard option with custom colours available by special order. Please refer to hose pages for specific uses of each hose style. This is just a small selection of kits we have available, contact your nearest dealer for your specific hose kit.



-6 DUAL FEED KITS - 200 SERIES BRAIDED HOSE				
PART NO.		SUIT	INLET	HOSE
STD	BLACK	CARBURETTOR	SIZE	SIZE / STYLE
160-06-T	160-06-T-BLK	Holley Dual Feed	-6	-6 Teflon® Braided
160-HP-06-T	160-HP-06-T-BLK	HP & QFT	-6	-6 Teflon® Braided
161-06-T	161-06-T-BLK	Demon	-6	-6 Teflon® Braided

-8 DUAL FEED KITS - 200 SERIES BRAIDED HOSE				
PART NO.		SUIT	INLET	HOSE
STD	BLACK	CARBURETTOR	SIZE	SIZE / STYLE
160-08-T	160-08-T-BLK	Holley Dual Feed	-8	-8 Teflon® Braided
160-HP-08-T	160-HP-08-T-BLK	HP & QFT	-8	-8 Teflon® Braided
161-08-T	161-08-T-BLK	Demon	-8	-8 Teflon® Braided
162-08-T	162-08-T-BLK	Dominator	-8	-8 Teflon® Braided

Teflon® is a registered trademark of DuPont. Start-Lite® is a registered trademark of Eaton.

ALUMINIUM ADAPTERS

METRIC ADAPTERS

Metric adapters are some of the most common in today's modern performance hose & fitting industry. We have the largest range and are always expanding to incorporate new fittings for new technology available on the market. Check out the range below!



NEW SIZE

MALE METRIC ADAPTERS

PART NO.	SIZE	METRIC
729-06-BLK	-6	M10 x 1.00
729-08-BLK	-8	M10 x 1.00
730-06-01-BLK	-6	M12 x 1.00
730-04-BLK	-4	M12 x 1.25
730-06-BLK	-6	M12 x 1.25
730-08-BLK	-8	M12 x 1.25
731-06-BLK	-6	M12 x 1.50
731-08-BLK	-8	M12 x 1.50
732-04-BLK	-4	M14 x 1.50
732-06-BLK	-6	M14 x 1.50
732-08-BLK	-8	M14 x 1.50
732-10-BLK	-10	M14 x 1.50
733-06-BLK	-6	M16 x 1.50
733-08-BLK	-8	M16 x 1.50
733-10-BLK	-10	M16 x 1.50
733-12-BLK	-12	M16 x 1.50



MALE METRIC ADAPTERS

PART NO.	SIZE	METRIC
734-06-BLK	-6	M18 x 1.50
734-08-BLK	-8	M18 x 1.50
734-10-BLK	-10	M18 x 1.50
734-12-BLK	-12	M18 x 1.50
735-06-BLK	-6	M20 x 1.50
735-08-BLK	-8	M20 x 1.50
735-10-BLK	-10	M20 x 1.50
735-12-BLK	-12	M20 x 1.50
736-06-BLK	-6	M22 x 1.50
736-08-BLK	-8	M22 x 1.50
736-10-BLK	-10	M22 x 1.50
736-12-BLK	-12	M22 x 1.50
737-06-BLK	-6	M24 x 1.50

Check out our range of aluminium crush washers on page 43



BUMP TUBE ADAPTER

PART NO.	SIZE	SIZE
740-06-BLK	-6	M14 x 1.5
741-06-BLK	-6	M16 x 1.5
742-06-BLK	-6	M18 x 1.5



FEMALE TO METRIC MALE

PART NO.	FEMALE	MALE
906-08-M14-BLK	-8	M14 x 1.5
906-08-M18-BLK	-8	M18 x 1.5
906-10-M18-BLK	-10	M18 x 1.5



METRIC REDUCING BUSH

PART NO.	MALE	FEMALE
912-M12-2-02-S	M12 x 1.25	1/8"NPT
912-M12-02-S	M12 x 1.5	1/8"NPT
912-M14-02-BLK	M14 x 1.5	1/8"NPT
912-M16-02-BLK	M16 x 1.5	1/8"NPT
912-M18-02-BLK	M18 x 1.5	1/8"NPT



90° OIL COOLER ADAPTER

PART NO.	SIZE	METRIC
922-M22-10-BLK	-10	M22 x 1.5
922-M22-12-BLK	-12	M22 x 1.5



INVERTED METRIC CAP

PART NO.	SIZE
170-14-BLK	M14 x 1.5



METRIC PLUG

PART NO.	SIZE
814-M10-1-BLK	M10 x 1.0
814-M10-2-BLK	M10 x 1.25
814-M12-2-BLK	M12 x 1.25
814-M12-BLK	M12 x 1.5
814-M14-BLK	M14 x 1.5
814-M16-BLK	M16 x 1.5
814-M18-BLK	M18 x 1.5



NPT TO M12 SENSOR

BLACK	MALE
912-06-M12-BLK	3/8"NPT
912-08-M12-BLK	1/2"NPT
M12 x 1.5 Female Thread	



FEMALE INV ADAPTER

PART NO.	SIZE	SIZE
171-06-12-BLK	-6	M12 x 1.5
171-06-14-BLK	-6	M14 x 1.5



VALVE COVER ADAPTER

BLACK	SIZE
708-10-M19-BLK	-10

Screw in adapter to suit Nissan RB30 valve covers with a threaded hole.



METRIC PUMP CAP

PART NO.	SIZE
820-M12x1.5-BLK	M12 x 1.5

This suits Bosch Fuel Pumps utilising the standard outlet connection with a banjo.



NEW 2020

MALE INVERTED FLARE

PART NO.	SIZE	SIZE
704-M16-06-BLK	-6	M16 x 1.5
704-M17-06-BLK	-6	M17 x 1.5



M12 X 1.5 CHECK VALVE

BLUE/BLK	BLACK	SIZE
612-06	612-06-BLK	-6
612-08	612-08-BLK	-8



NEW 2020

FEMALE - MALE M10 PORT

PART NO.	SIZE	MATERIAL
140-03-M10-S	-3	Steel

An inline tee with an M10 x 1.0 thread and concave seat to accept Bosch senders or other M10 fittings. Sender not included.



METRIC OIL SENDER ADAPTER

BLACK	NPT	THREAD
810-M12-02-BLK	1/8"	M12 x 1.5
810-M14-02-BLK	1/8"	M14 x 1.5
810-M16-02-BLK	1/8"	M16 x 1.5

For use of the standard sender and aftermarket gauges. Three 1/8"NPT outlets with two plugs supplied. M12, M14 & M16!

ALUMINIUM ADAPTERS

BSPP ADAPTERS

British Standard Pipe Parallel (BSPP) is commonly found in older English vehicles in Engine Blocks, Oil Pumps, Fuel Filters and Oil Filter Adapters.



MALE BSPP ADAPTER

RED	BLACK	SIZE	BSPP
750-06	750-06-BLK	-6	1/4"BSPP
750-08	750-08-BLK	-8	1/4"BSPP

751-06	751-06-BLK	-6	3/8"BSPP
751-08	751-08-BLK	-8	3/8"BSPP
751-10	751-10-BLK	-10	3/8"BSPP

MALE BSPP ADAPTER

RED	BLACK	SIZE	BSPP
752-06	752-06-BLK	-6	1/2"BSPP
752-08	752-08-BLK	-8	1/2"BSPP
752-10	752-10-BLK	-10	1/2"BSPP
752-12	752-12-BLK	-12	1/2"BSPP

753-10	753-10-BLK	-10	5/8"BSPP
753-12	753-12-BLK	-12	5/8"BSPP

754-10	754-10-BLK	-10	3/4"BSPP
754-12	754-12-BLK	-12	3/4"BSPP

FEMALE BSPP ADAPTER

RED	BLACK	SIZE	BSPP
760-10	760-10-BLK	-10	1/2"BSPP
760-12	760-12-BLK	-12	1/2"BSPP

BSPP BOTTLE ADAPTER

RED	BLACK	BSPP
759-08-02	759-08-02-BLK	1/2"BSPP

Flat Face Seal - 1/8"NPT Port

TUBE ADAPTERS, NUTS & SLEEVES

Speedflow manufacture compression style tube adapters along with tube nuts & sleeves to convert standard steel or aluminium tube to AN fittings. The tube adapters use a compression olive to seal, whereas the tube nut & sleeve requires the tube to be flared using a 37° flaring tool.



MALE TUBE ADAPTER

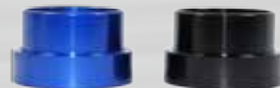
RED/BLUE	BLACK	SIZE	TUBE SIZE
618-04-04	618-04-04-BLK	-4	1/4"
618-06-05	618-06-05-BLK	-6	5/16"
618-06-06	618-06-06-BLK	-6	3/8"
618-08-08	618-08-08-BLK	-8	1/2"
618-10-10	618-10-10-BLK	-10	5/8"
618-10-12	618-10-12-BLK	-10	3/4"
618-12-12	618-12-12-BLK	-12	3/4"

FEMALE TUBE ADAPTER

RED/BLUE	BLACK	SIZE	TUBE SIZE
619-04-04	619-04-04-BLK	-4	1/4"
619-06-05	619-06-05-BLK	-6	5/16"
619-06-06	619-06-06-BLK	-6	3/8"
619-08-08	619-08-08-BLK	-8	1/2"
619-10-10	619-10-10-BLK	-10	5/8"
619-12-12	619-12-12-BLK	-12	3/4"

REPLACEMENT OLIVE

PART NO.	SIZE
C618-04	1/4" Compression Olive
C618-05	5/16" Compression Olive
C618-06	3/8" Compression Olive
C618-08	1/2" Compression Olive
C618-10	5/8" Compression Olive
C618-12	3/4" Compression Olive



ALUMINIUM TUBE NUTS

BLUE	BLACK	SIZE
818-03	818-03-BLK	-3 · 7/16" Hex
-	318-03-BLK	-3 · 1/2" Hex
818-04	818-04-BLK	-4
818-05	818-05-BLK	-5
818-06	818-06-BLK	-6
818-08	818-08-BLK	-8
818-10	818-10-BLK	-10
818-12	818-12-BLK	-12
818-16	818-16-BLK	-16
818-20	818-20-BLK	-20

ALUMINIUM TUBE SLEEVES

BLUE	BLACK	SIZE	TUBE SIZE
819-03	819-03-BLK	-3	3/16"
819-04	819-04-BLK	-4	1/4"
819-05	819-05-BLK	-5	5/16"
819-06	819-06-BLK	-6	3/8"
819-08	819-08-BLK	-8	1/2"
819-10	819-10-BLK	-10	5/8"
819-12	819-12-BLK	-12	3/4"
819-16	819-16-BLK	-16	1"
819-20	819-20-BLK	-20	1-1/4"

ALUMINIUM ADAPTERS


MALE AN/JIC ADAPTERS

If you need to join, tee, extend, reduce or expand a fitting, we have the below range to compliment every job!




NEW SIZE

MALE FLARE UNION		
BLUE	BLACK	SIZE
815-03	815-03-BLK	-3
815-04	815-04-BLK	-4
815-06	815-06-BLK	-6
815-08	815-08-BLK	-8
815-10	815-10-BLK	-10
815-12	815-12-BLK	-12
815-16	815-16-BLK	-16
815-20	815-20-BLK	-20




NEW SIZE

MALE FLARE REDUCERS		
BLUE	BLACK	SIZE
815-04-03	815-04-03-BLK	-4 -3
815-06-03	815-06-03-BLK	-6 -3
815-06-04	815-06-04-BLK	-6 -4
815-06-05	815-06-05-BLK	-6 -5
815-08-06	815-08-06-BLK	-8 -6
815-10-06	815-10-06-BLK	-10 -6
815-10-08	815-10-08-BLK	-10 -8
815-12-08	815-12-08-BLK	-12 -8
815-12-10	815-12-10-BLK	-12 -10
815-16-12	815-16-12-BLK	-16 -12
815-20-12	815-20-12-BLK	-20 -12
815-20-16	815-20-16-BLK	-20 -16



90° FLARE UNION		
BLUE	BLACK	SIZE
821-06	821-06-BLK	-6
821-08	821-08-BLK	-8
821-10	821-10-BLK	-10



NEW 2020


MALE - MALE 1/8" NPT PORT		
RED/BLUE	BLACK	SIZE
140-206	140-06-BLK	-6
140-208	140-08-BLK	-8
140-210	140-10-BLK	-10
140-212	140-12-BLK	-12




MALE FLARE TEE		
BLUE	BLACK	SIZE
824-03	824-03-BLK	-3
824-04	824-04-BLK	-4
824-06	824-06-BLK	-6
824-08	824-08-BLK	-8
824-10	824-10-BLK	-10
824-12	824-12-BLK	-12
824-16	824-16-BLK	-16

BULKHEAD FITTINGS & ACCESSORIES


Bulkhead fittings are versatile and handy fittings when you want to pass through a fire wall, tank, panel, fuel cell or a vehicle bulkhead. Basically a bulkhead fitting seals off an area with the use of the jam nut. There is no need for grommets and passing long lengths of hose through the vehicle. A real time saver!



STRAIGHT BULKHEAD		
BLUE	BLACK	SIZE
832-03	832-03-BLK	-3
832-04	832-04-BLK	-4
832-06	832-06-BLK	-6
832-08	832-08-BLK	-8
832-10	832-10-BLK	-10
832-12	832-12-BLK	-12
832-16	832-16-BLK	-16



45° BULKHEAD		
BLUE	BLACK	SIZE
837-03	837-03-BLK	-3
837-04	837-04-BLK	-4
837-06	837-06-BLK	-6
837-08	837-08-BLK	-8
837-10	837-10-BLK	-10
837-12	837-12-BLK	-12



90° BULKHEAD		
BLUE	BLACK	SIZE
833-03	833-03-BLK	-3
833-04	833-04-BLK	-4
833-06	833-06-BLK	-6
833-08	833-08-BLK	-8
833-10	833-10-BLK	-10
833-12	833-12-BLK	-12
833-16	833-16-BLK	-16



NEW 2020

EXTRA LONG BULKHEAD		
BLUE	BLACK	SIZE
832-06-XL	832-06-XL-BLK	-6
832-08-XL	832-08-XL-BLK	-8
832-10-XL	832-10-XL-BLK	-10
832-12-XL	832-12-XL-BLK	-12

All sizes have a 3.125" (79.4mm) under head length to the end of the flare.



BULKHEAD TEE ON RUN		
BLUE	BLACK	SIZE
804-03	804-03-BLK	-3
804-04	804-04-BLK	-4
804-06	804-06-BLK	-6
804-08	804-08-BLK	-8



BULKHEAD TEE		
BLUE	BLACK	SIZE
834-03	834-03-BLK	-3
834-04	834-04-BLK	-4
834-06	834-06-BLK	-6
834-08	834-08-BLK	-8
834-10	834-10-BLK	-10
834-12	834-12-BLK	-12



* -3 also available in Steel. Add -S to part number.

BULKHEAD NUT		
BLUE	BLACK	SIZE
924-03	924-03-BLK	-3
924-04	924-04-BLK	-4
924-06	924-06-BLK	-6
924-08	924-08-BLK	-8
924-10	924-10-BLK	-10
924-12	924-12-BLK	-12
924-16	924-16-BLK	-16



TEFLON® WASHERS	
PART NO.	SIZE
903-04	-4
903-06	-6
903-08	-8
903-10	-10
903-12	-12
903-16	-16

Teflon® is a registered trademark of DuPont.

ALUMINIUM ADAPTERS

REDUCERS, EXPANDERS, EXTENSIONS, PLUGS & CAPS

Speedflow manufactures a comprehensive range of flare reducers, expanders and extensions. We are also extending our range of plugs and caps to include metric to complement our popular imperial sizes.



FLARE REDUCERS			
BLUE	BLACK	FEMALE	MALE
950-04-03	950-04-03-BLK	-4	-3
950-06-03	950-06-03-BLK	-6	-3
950-06-04	950-06-04-BLK	-6	-4
950-07-06*	950-07-06-BLK*	5/8" SAE	-6
950-08-06	950-08-06-BLK	-8	-6
950-10-06	950-10-06-BLK	-10	-6
950-10-08	950-10-08-BLK	-10	-8
950-12-08	950-12-08-BLK	-12	-8
950-12-10	950-12-10-BLK	-12	-10
950-16-12	950-16-12-BLK	-16	-12
950-20-16	950-20-16-BLK	-20	-16

* To adapt Ford power steering to -6 male.



FLARE EXPANDERS			
PART NO.	BLACK	FEMALE	MALE
951-03-04	951-03-04-BLK	-3	-4
951-04-06	951-04-06-BLK	-4	-6
951-05-06	951-05-06-BLK	-5	-6
951-06-08	951-06-08-BLK	-6	-8
951-06-10	951-06-10-BLK	-6	-10
951-08-10	951-08-10-BLK	-8	-10
951-08-12	951-08-12-BLK	-8	-12
951-10-12	951-10-12-BLK	-10	-12
951-12-16	951-12-16-BLK	-12	-16
951-16-20	951-16-20-BLK	-16	-20



FLARE EXTENSION		
BLUE	BLACK	SIZE
952-04	952-04-BLK	-4
952-06	952-06-BLK	-6
952-08	952-08-BLK	-8
952-10	952-10-BLK	-10
952-12	952-12-BLK	-12
952-16	952-16-BLK	-16



METRIC CAP	
PART NO.	SIZE
170-14-BLK	M14 x 1.5



IN HEX O-RING PLUG		
BLUE	BLACK	SIZE
814-03	814-03-BLK	-3
814-04	814-04-BLK	-4
814-06	814-06-BLK	-6
814-08	814-08-BLK	-8
814-10	814-10-BLK	-10
814-12	814-12-BLK	-12
814-16	814-16-BLK	-16

METRIC PLUG	
BLACK	SIZE
814-M10-1-BLK	M10 x 1.0
814-M10-2-BLK	M10 x 1.25
814-M12-2-BLK	M12 x 1.25
814-M12-BLK	M12 x 1.5
814-M14-BLK	M14 x 1.5
814-M16-BLK	M16 x 1.5
814-M18-BLK	M18 x 1.5

NPT PLUGS		
BLUE	BLACK	NPT
932-01	932-01-BLK	1/16"
932-02	932-02-BLK	1/8"
932-04	932-04-BLK	1/4"
932-06	932-06-BLK	3/8"
932-08	932-08-BLK	1/2"
932-12	932-12-BLK	3/4"
932-16	932-16-BLK	1"



METRIC PUMP CAP	
PART NO.	SIZE
820-M12x1.5-BLK	M12 x 1.5

This suits Bosch Fuel Pumps utilising the standard outlet connection with a banjo.



FLARE PLUG		
BLUE	BLACK	SIZE
806-03	806-03-BLK	-3
806-04	806-04-BLK	-4
806-06	806-06-BLK	-6
806-08	806-08-BLK	-8
806-10	806-10-BLK	-10
806-12	806-12-BLK	-12
806-16	806-16-BLK	-16
806-20	806-20-BLK	-20

FLARE CAP		
BLUE	BLACK	SIZE
820-03	820-03-BLK	-3
820-04	820-04-BLK	-4
820-06	820-06-BLK	-6
820-08	820-08-BLK	-8
820-10	820-10-BLK	-10
820-12	820-12-BLK	-12
820-16	820-16-BLK	-16
820-20	820-20-BLK	-20

FLARE PLUG - PLASTIC		
PART NO.	10 PACK	SIZE
806-03-PL	806-03-PL-X	-3
806-04-PL	806-04-PL-X	-4
806-05-PL	806-05-PL-X	-5
806-06-PL	806-06-PL-X	-6
806-08-PL	806-08-PL-X	-8
806-10-PL	806-10-PL-X	-10
806-12-PL	806-12-PL-X	-12
806-16-PL	806-16-PL-X	-16

FLARE CAP - PLASTIC		
PART NO.	10 PACK	SIZE
820-03-PL	820-03-PL-X	-3
820-04-PL	820-04-PL-X	-4
820-05-PL	820-05-PL-X	-5
820-06-PL	820-06-PL-X	-6
820-08-PL	820-08-PL-X	-8
820-10-PL	820-10-PL-X	-10
820-12-PL	820-12-PL-X	-12
820-16-PL	820-16-PL-X	-16

ALUMINIUM ADAPTERS

O-RING PORT ADAPTERS

We manufacture a full range of O-Ring Port Adapters often found in Dry Sump Pumps, Fuel Rails, Regulators, Fuel Pumps and Filters.



NEW SIZES

STR MALE PORT ADAPTERS

BLUE	BLACK	SIZE	PORT
920-03	920-03-BLK	-3	-3
920-03-04	920-03-04-BLK	-3	-4
920-03-06	920-03-06-BLK	-3	-6

920-04-03	920-04-03-BLK	-4	-3
920-04	920-04-BLK	-4	-4
920-04-06	920-04-06-BLK	-4	-6
920-04-08	920-04-08-BLK	-4	-8

920-06-03	920-06-03-BLK	-6	-3
920-06-04	920-06-04-BLK	-6	-4
920-06	920-06-BLK	-6	-6
920-06-08	920-06-08-BLK	-6	-8
920-06-10	920-06-10-BLK	-6	-10
920-06-12	920-06-12-BLK	-6	-12

920-08-06	920-08-06-BLK	-8	-6
920-08	920-08-BLK	-8	-8
920-08-10	920-08-10-BLK	-8	-10
920-08-12	920-08-12-BLK	-8	-12

920-10-08	920-10-08-BLK	-10	-8
920-10	920-10-BLK	-10	-10
920-10-12	920-10-12-BLK	-10	-12
920-10-16	920-10-16-BLK	-10	-16

920-12-08	920-12-08-BLK	-12	-8
920-12-10	920-12-10-BLK	-12	-10
920-12	920-12-BLK	-12	-12
920-12-16	920-12-16-BLK	-12	-16
920-12-20	920-12-20-BLK	-12	-20

920-16-10	920-16-10-BLK	-16	-10
920-16-12	920-16-12-BLK	-16	-12
920-16	920-16-BLK	-16	-16
920-16-20	920-16-20-BLK	-16	-20

920-20	920-20-BLK	-20	-20
920-20-16	920-20-16-BLK	-20	-16



PORT REDUCING BUSH

BLUE	BLACK	PORT	FEMALE
912-P06-02	912-P06-02-BLK	-6	1/8"
912-P08-02	912-P08-02-BLK	-8	1/8"
912-P10-02	912-P10-02-BLK	-10	1/8"
912-P12-02	912-P12-02-BLK	-12	1/8"



45° MALE PORT ADAPTERS

BLUE	BLACK	SIZE	PORT
923-04	923-04-BLK	-4	-4

923-06	923-06-BLK	-6	-6
--------	------------	----	----

923-08	923-08-BLK	-8	-8
--------	------------	----	----

923-10	923-10-BLK	-10	-10
--------	------------	-----	-----

923-12-10	923-12-10-BLK	-12	-10
-----------	---------------	-----	-----

923-12	923-12-BLK	-12	-12
--------	------------	-----	-----



STR PORT ADAPTER - LONG

BLUE	BLACK	SIZE	PORT
920-06-L	920-06-L-BLK	-6	-6

920-06-08-L	920-06-08-L-BLK	-6	-8
-------------	-----------------	----	----

920-08-L	920-08-L-BLK	-8	-8
----------	--------------	----	----

920-10-L	920-10-L-BLK	-10	-10
----------	--------------	-----	-----

920-12-L	920-12-L-BLK	-12	-12
----------	--------------	-----	-----

920-16-L	920-16-L-BLK	-16	-16
----------	--------------	-----	-----



IN HEX O-RING PLUG

BLUE	BLACK	PORT
814-03	814-03-BLK	-3

814-04	814-04-BLK	-4
--------	------------	----

814-06	814-06-BLK	-6
--------	------------	----

814-08	814-08-BLK	-8
--------	------------	----

814-10	814-10-BLK	-10
--------	------------	-----

814-12	814-12-BLK	-12
--------	------------	-----

814-16	814-16-BLK	-16
--------	------------	-----



MALE PORT UNION

BLUE	BLACK	PORT	PORT
921-06-08	921-06-08-BLK	-6	-8

921-08-08	921-08-08-BLK	-8	-8
-----------	---------------	----	----

921-08-10	921-08-10-BLK	-8	-10
-----------	---------------	----	-----

921-10-10	921-10-10-BLK	-10	-10
-----------	---------------	-----	-----



NEW SIZE

90° MALE PORT ADAPTERS

BLUE	BLACK	SIZE	PORT
922-04	922-04-BLK	-4	-4

922-04-06	922-04-06-BLK	-4	-6
-----------	---------------	----	----

922-06	922-06-BLK	-6	-6
--------	------------	----	----

922-06-08	922-06-08-BLK	-6	-8
-----------	---------------	----	----

922-08-06	922-08-06-BLK	-8	-6
-----------	---------------	----	----

922-08	922-08-BLK	-8	-8
--------	------------	----	----

922-08-10	922-08-10-BLK	-8	-10
-----------	---------------	----	-----

922-10-08	922-10-08-BLK	-10	-8
-----------	---------------	-----	----

922-10	922-10-BLK	-10	-10
--------	------------	-----	-----

922-12-10	922-12-10-BLK	-12	-10
-----------	---------------	-----	-----

922-12	922-12-BLK	-12	-12
--------	------------	-----	-----

922-16	922-16-BLK	-16	-16
--------	------------	-----	-----



WATER PUMP ADAPTER

BLUE	BLACK	SIZE	PORT
920-16-20-MZ	920-16-20-MZ-BLK	-16	-20



FILTERED SUMP ADAPTERS

BLUE	BLACK	SIZE	PORT
920-10-12-FS	920-10-12-FS-BLK	-10	-12

920-12-FS	920-12-FS-BLK	-12	-12
-----------	---------------	-----	-----

920-16-12-FS	920-16-12-FS-BLK	-16	-12
--------------	------------------	-----	-----



FEMALE O-RING TEE

BLUE	BLACK	PORT
938-06	938-06-BLK	-6

938-08	938-08-BLK	-8
--------	------------	----

938-10	938-10-BLK	-10
--------	------------	-----

938-12	938-12-BLK	-12
--------	------------	-----

ALUMINIUM ADAPTERS

NPT ADAPTERS

We have a large selection of NPT to male flare adapters in Straight, 45° and 90°. Speedflow fittings are beautifully made in a high flow billet one piece design.



STR MALE NPT ADAPTERS

BLUE	BLACK	SIZE	NPT
816-03	816-03-BLK	-3	1/8"
816-03-04	816-03-04-BLK	-3	1/4"
816-04-01	816-04-01-BLK	-4	1/16"
816-04	816-04-BLK	-4	1/8"
816-04-04	816-04-04-BLK	-4	1/4"
816-04-06	816-04-06-BLK	-4	3/8"
816-06-02	816-06-02-BLK	-6	1/8"
816-06	816-06-BLK	-6	1/4"
816-06-06	816-06-06-BLK	-6	3/8"
816-06-08	816-06-08-BLK	-6	1/2"
816-08-02	816-08-02-BLK	-8	1/8"
816-08-04	816-08-04-BLK	-8	1/4"
816-08	816-08-BLK	-8	3/8"
816-08-08	816-08-08-BLK	-8	1/2"
816-08-12	816-08-12-BLK	-8	3/4"
816-10-06	816-10-06-BLK	-10	3/8"
816-10	816-10-BLK	-10	1/2"
816-10-12	816-10-12-BLK	-10	3/4"
816-12-08	816-12-08-BLK	-12	1/2"
816-12	816-12-BLK	-12	3/4"
816-12-16	816-12-16-BLK	-12	1"
816-16-12	816-16-12-BLK	-16	3/4"
816-16	816-16-BLK	-16	1"
816-20	816-20-BLK	-20	1-1/4"
816-20-16	816-20-16-BLK	-20	1"



45° MALE NPT ADAPTERS

BLUE	BLACK	SIZE	NPT
823-03	823-03-BLK	-3	1/8"
823-04	823-04-BLK	-4	1/8"
823-04-04	823-04-04-BLK	-4	1/4"
823-06-02	823-06-02-BLK	-6	1/8"
823-06	823-06-BLK	-6	1/4"
823-06-06	823-06-06-BLK	-6	3/8"
823-06-08	823-06-08-BLK	-6	1/2"
823-08	823-08-BLK	-8	3/8"
823-08-08	823-08-08-BLK	-8	1/2"
823-10	823-10-BLK	-10	1/2"
823-12-08	823-12-08-BLK	-12	1/2"
823-12	823-12-BLK	-12	3/4"



90° MALE NPT ADAPTERS

BLUE	BLACK	SIZE	NPT
822-03	822-03-BLK	-3	1/8"
822-04	822-04-BLK	-4	1/8"
822-04-04	822-04-04-BLK	-4	1/4"
822-06-02	822-06-02-BLK	-6	1/8"
822-06	822-06-BLK	-6	1/4"
822-06-06	822-06-06-BLK	-6	3/8"
822-06-08	822-06-08-BLK	-6	1/2"
822-08-04	822-08-04-BLK	-8	1/4"
822-08	822-08-BLK	-8	3/8"
822-08-08	822-08-08-BLK	-8	1/2"
822-10-06	822-10-06-BLK	-10	3/8"
822-10	822-10-BLK	-10	1/2"
822-10-12	822-10-12-BLK	-10	3/4"
822-12-08	822-12-08-BLK	-12	1/2"
822-12	822-12-BLK	-12	3/4"
822-16-12	822-16-12-BLK	-16	3/4"
822-16	822-16-BLK	-16	1"



AN FEMALE TO NPT MALE ADAPTERS

BLUE	BLACK	STEEL	SIZE	NPT
-	-	906-03-02-S	-3	1/8"
906-04-02	906-04-02-BLK	-	-4	1/8"
906-06-04	906-06-04-BLK	-	-6	1/4"
906-06-06	906-06-06-BLK	-	-6	3/8"
906-08-06	906-08-06-BLK	-	-8	3/8"
906-10-08	906-10-08-BLK	-	-10	1/2"

BSP TAPERED ADAPTERS



BSP TAPERED ADAPTERS

BLUE	BLACK	SIZE	BSPT
817-06-02	817-06-02-BLK	-6	1/8"
817-06-04	817-06-04-BLK	-6	1/4"
817-06-06	817-06-06-BLK	-6	3/8"
817-08-06	817-08-06-BLK	-8	3/8"
817-08-08	817-08-08-BLK	-8	1/2"
817-10-06	817-10-06-BLK	-10	3/8"
817-10-08	817-10-08-BLK	-10	1/2"
817-10-12	817-10-12-BLK	-10	3/4"

Speedflow now offer a small range of BSP Tapered adapters to suit the increasing variety of parts that are supplied with this thread form. Our BSPT adapters are machined with a notch in the hex to make it easier to identify between NPT & BSPT.



TEE W/NPT ON BRANCH

BLUE	BLACK	SIZE	NPT
825-03	825-03-BLK	-3	1/8"
825-04	825-04-BLK	-4	1/8"
825-06	825-06-BLK	-6	1/4"
825-08	825-08-BLK	-8	3/8"
825-10	825-10-BLK	-10	1/2"
825-12	825-12-BLK	-12	3/4"



TEE W/NPT ON RUN

BLUE	BLACK	SIZE	NPT
826-03	826-03-BLK	-3	1/8"
826-04	826-04-BLK	-4	1/8"
826-06	826-06-BLK	-6	1/4"
826-08	826-08-BLK	-8	3/8"
826-10	826-10-BLK	-10	1/2"
826-12	826-12-BLK	-12	3/4"

ALUMINIUM ADAPTERS

NPT ADAPTERS

We have a large selection of NPT to male flare adapters in Straight, 45° and 90°. Speedflow fittings are beautifully made in a high flow billet one piece design.



FEMALE NPT COUPLER		
BLUE	BLACK	NPT
910-02	910-02-BLK	1/8"
910-04	910-04-BLK	1/4"
910-06	910-06-BLK	3/8"
910-08	910-08-BLK	1/2"
910-12	910-12-BLK	3/4"



MALE NPT NIPPLE		
BLUE	BLACK	NPT
911-02	911-02-BLK	1/8"
911-04	911-04-BLK	1/4"
911-06	911-06-BLK	3/8"
911-08	911-08-BLK	1/2"
911-12	911-12-BLK	3/4"



90° FEMALE - MALE		
BLUE	BLACK	NPT
914-02	914-02-BLK	1/8"
914-04	914-04-BLK	1/4"
914-06	914-06-BLK	3/8"
914-08	914-08-BLK	1/2"



FEMALE NPT TEE		
BLUE	BLACK	NPT
917-02	917-02-BLK	1/8"
917-04	917-04-BLK	1/4"
917-06	917-06-BLK	3/8"
917-08	917-08-BLK	1/2"



1/8" NPT - EXTENSION	
BLACK	LENGTH
372-02-BLK	38mm
372-202-BLK	28mm

BLUE available remove -BLK from Part No.



45° FEMALE - MALE	
BLACK	NPT
915-02-BLK	1/8"

BLUE available remove -BLK from Part No.



TEE - MALE ON RUN	
BLACK	NPT
916-02-BLK	1/8"

BLUE available remove -BLK from Part No.



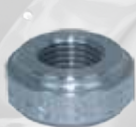
FLARE TEE W/NPT		
BLACK	SIZE	NPT
918-04-02-BLK	-4	1/8"

BLUE available remove -BLK from Part No.



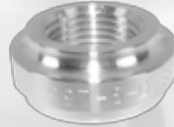
MALE TO M10 SENSOR	
PART NO.	MALE
912-02-M10	1/8"NPT
912-M12-M10	M12x1.5

Perfect for M10 x 1.00 Sensors



STEEL NPT WELD ON	
PART NO.	SIZE
997-02-S	1/8"NPT

Perfect for 1/8" EGT probe adapters



ALLOY NPT WELD ON	
PART NO.	SIZE
997-02-D	1/8"NPT
997-04-D	1/4"NPT
997-06-D	3/8"NPT
997-08-D	1/2"NPT
997-12-D	3/4"NPT



NPT PLUGS	
BLACK	NPT
932-01-BLK	1/16"
932-02-BLK	1/8"
932-04-BLK	1/4"
932-06-BLK	3/8"
932-08-BLK	1/2"
932-12-BLK	3/4"
932-16-BLK	1"

BLUE available remove -BLK from Part No.



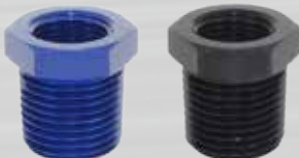
METRIC SENSOR BUSH	
BLACK	MALE
912-M12-2-02-S	M12 x 1.25
912-M12-02-S	M12 x 1.5
912-M14-02-BLK	M14 x 1.5
912-M16-02-BLK	M16 x 1.5
912-M18-02-BLK	M18 x 1.5

1/8" NPT Female Thread



NPT TO M12 SENSOR	
BLACK	MALE
912-06-M12-BLK	3/8"NPT
912-08-M12-BLK	1/2"NPT

M12 x 1.5 Female Thread



NPT REDUCING BUSH			
BLUE	BLACK	MALE	FEMALE
912-04-02	912-04-02-BLK	1/4"	1/8"
912-06-02	912-06-02-BLK	3/8"	1/8"
912-06-04	912-06-04-BLK	3/8"	1/4"
912-08-02	912-08-02-BLK	1/2"	1/8"
912-08-04	912-08-04-BLK	1/2"	1/4"
912-08-06	912-08-06-BLK	1/2"	3/8"
912-12-04	912-12-04-BLK	3/4"	1/4"
912-12-06	912-12-06-BLK	3/4"	3/8"
912-12-08	912-12-08-BLK	3/4"	1/2"
912-16-08	912-16-08-BLK	1"	1/2"
912-16-12	912-16-12-BLK	1"	3/4"



PORT REDUCING BUSH		
BLACK	PORT	FEM
912-P06-02-BLK	-6	1/8"
912-P06-M10-BLK	-6	M10 x 1
912-P08-02-BLK	-8	1/8"
912-P08-M10-BLK	-8	M10 x 1
912-P10-02-BLK	-10	1/8"
912-P12-02-BLK	-12	1/8"

Also available in BLUE remove -BLK from Part No.



TEMP PROBE ADAPTERS		
BLACK	NPT	FEMALE
660-06-BLK	3/8"	5/8"-18
660-08-BLK	1/2"	5/8"-18

Adapt mechanical temp probes to NPT holes.
Also available in BLUE remove -BLK from Part No.



TEMP PROBE CAPS		
BLACK	SIZE	FEMALE
759-F08-02-BLK	-8	1/8"NPT
759-F10-02-BLK	-10	1/8"NPT
759-F12-02-BLK	-12	1/8"NPT
759-F08-M12-BLK	-8	12 x 1.5
759-F10-M12-BLK	-10	12 x 1.5
759-F12-M12-BLK	-12	12 x 1.5

Adapt temp probes to AN Male fitting or tee.
Also available in BLUE remove -BLK from Part No.

WELD ON FITTINGS

WELD ON FITTINGS, MALE, FEMALE & SPECIAL PURPOSE

We have assembled a huge range of weld on fittings to make the job of fabricating a tank, radiator or your speciality job a breeze. When you are fabricating you don't have the time to search for the right part, that is why we have this complete range available right off the shelf!



ALUMINIUM MALE	
PART NO.	SIZE
999-03-D	-3
999-04-D	-4
999-06-D	-6
999-08-D	-8
999-10-D	-10
999-12-D	-12
999-16-D	-16
999-20-D	-20



ALUMINIUM FLOWED	
PART NO.	SIZE
999-06-DF	-6
999-08-DF	-8
999-10-DF	-10
999-12-DF	-12

These are machined with a profiled radius on the inside to increase flow.
Standard weld on's are drilled straight through and parted off.



NEW 2020

ALUMINIUM HEX	
PART NO.	SIZE
999-06-DH	-6 - 3/8"
999-08-DH	-8 - 1/2"
999-10-DH	-10 - 5/8"
999-12-DH	-12 - 3/4"
999-16-DH	-16 - 1"

These are manufactured with a hex and an internal boss to accept the appropriate sized tube.



STEEL MALE	
PART NO.	SIZE
999-03-S	-3
999-04-S	-4
999-06-S	-6
999-08-S	-8
999-10-S	-10
999-12-S	-12
999-16-S	-16



STAINLESS MALE	
PART NO.	SIZE
999-03-SS	-3
999-04-SS	-4
999-06-SS	-6
999-08-SS	-8
999-10-SS	-10
999-12-SS	-12
999-16-SS	-16
999-20-SS	-20



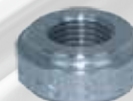
ALLOY ORB FEMALE	
PART NO.	SIZE
990-04-D	-4
990-06-D	-6
990-08-D	-8
990-10-D	-10
990-12-D	-12
990-16-D	-16



STEEL ORB FEMALE	
PART NO.	SIZE
990-06-S	-6
990-08-S	-8
990-10-S	-10
990-12-S	-12



ALUMINIUM NPT FEMALE	
PART NO.	SIZE
997-02-D	1/8"NPT
997-04-D	1/4"NPT
997-06-D	3/8"NPT
997-08-D	1/2"NPT
997-12-D	3/4"NPT



1/8"NPT FEMALE	
PART NO.	MATERIAL
997-02-S	Steel
997-02-SS	Stainless Steel

Perfect for 1/8" EGT probe adapters



1/8"BSPP FEMALE	
PART NO.	MATERIAL
997-02-BSPP	Aluminium



ALLOY METRIC FEMALE	
PART NO.	SIZE
990-M10-1-D	M10 x 1.0
990-M12-D	M12 x 1.5
990-M14-D	M14 x 1.5

Perfect for metric temp probes



INJECTOR WELD BOSS	
PART NO.	SIZE
989-99	14mm ID

Weld boss for EFI injectors



PUSHLOCK TAILS	
PART NO.	SIZE
989-406	-6 (3/8")
989-408	-8 (1/2")
989-410	-10 (5/8")
989-412	-12 (3/4")



WELD ON TAILS	
PART NO.	SIZE
989-505	5/16"
989-506	3/8"
989-508	1/2"



K-TYPE EGT WELD ON & CAP		
PART NO.	SIZE	MATERIAL
989-04-S	7/16"-20	Steel
989-04-SS	7/16"-20	Stainless
989-04-CAP	7/16"-20	Steel Cap



NEW 2020

O2 WELD ON & PLUG - M14		
PART NO.	SIZE	MATERIAL
989-M14-S	M14 x 1.5	Steel
989-M14-SS	M14 x 1.5	Stainless
806-M14-S	M14 x 1.5	Steel Plug



NEW Material

O2 WELD ON & PLUG - M18		
PART NO.	SIZE	MATERIAL
989-M18-D	M18 x 1.5	Aluminium
989-M18-S	M18 x 1.5	Steel
989-M18-SS	M18 x 1.5	Stainless
806-M18-S	M18 x 1.5	Steel Plug

WELD ON NECKS, CAPS & COMPONENTS



NEW 2020

BILLET RADIATOR NECKS			
PART NO.	I.D. SIZE	O.D. SIZE	APPLICATION
462-01	32mm	43mm	Small Neck
462-02	40mm	57mm	Large Neck

BILLET RADIATOR CAPS			
RAW	BLACK	PRESSURE	APPLICATION
462-32.16	422-32.16-BLK	16lb	Large Neck

WELD ON NECKS AND CAPS

We have manufactured more weld necks in steel and stainless to suit our aluminium caps. If you are fabricating a tank, we have a cap to suit! Caps are supplied as Raw, add colour behind part number if you require an anodised version. A Nitrile (NRB) O-Ring is supplied standard, Viton O-Rings are available separately.



WELD ON FILLER NECKS									
PART NO.	WELD NECK	PART NO.	WELD NECK	PART NO.	WELD NECK	NECK I.D.	CAP	CAP O.D.	HEIGHT
460-16	Aluminium	460-16-S	Steel	460-16-SS	Stainless Steel	25mm (1")	Aluminium	44mm	28mm
460-24	Aluminium	460-24-S	Steel	460-24-SS	Stainless Steel	38mm (1.5")	Aluminium	57mm	30mm
460-32	Aluminium	-	Steel	460-32-SS	Stainless Steel	52mm (2")	Aluminium	70mm	30mm



NECK & CAP WITH ROLL OVER VALVE	
PART NO.	WELD NECK / COLOR
460-32-RV	Aluminum / Raw
460-32-RV-BLK	Aluminum / Black
460 Series cap with 613-06 vent valve / roll over valve installed.	

REPLACEMENT CAPS	
PART NO.	COLOUR
C4600-16	Raw - Standard
C4600-24	Custom Colours
C4600-32	Blue, Natural, Black, Red.

REPLACEMENT WELD NECK	
PART NO.	MATERIAL
C460-16	Add to Part No. -D (Aluminium) -S (Steel) -SS (Stainless Steel)
C460-24	
C460-32	

NEW Material

REPLACEMENT O-RINGS		
NITRILE	VITON	APPLICATIONS
905-16	905-16V	Suit 460-16 Cap
905-24	905-24V	Suit 460-24 Cap
905-32	905-32V	Suit 460-32 Cap



Ryan McIntosh - Lock N Load

INLINE FILTERS

SPEEDFLOW ARE PROUD TO INTRODUCE THEIR LATEST RANGE OF PERFORMANCE INLINE FILTERS. WE HAVE INVESTED COUNTLESS HOURS IN DESIGNING, MACHINING AND TESTING TO ENSURE THE BEST FILTRATION AVAILABLE FOR THE PERFORMANCE MARKET.

RESULTS FROM FLOW AND PRESSURE TESTING ON OUR 601 & 602 SERIES FILTERS SURPASSED OUR EXPECTATIONS, FLOWING WELL IN EXCESS OF 156PM (53LPM) WITH MINIMAL PRESSURE LOSS USING A -10 UNIT! THESE UNITS ARE USABLE FOR APPLICATIONS OVER 3000HP!

INLINE FILTERS - 600 MICRO SERIES

These are the smallest filter in our range, the body length measures 28mm (1.10") making this perfect to place inline where space is limited or only a small filter is required. The body is machined from 6061-T6 aluminium with a hard anodised finish and fitted with a 44 micron pleated disc screen as standard. If you require the new 74 micron screen, please order this as a separate item.



NEW SIZE

MICRO SERIES	
BLACK	SIZE
600-03-BLK	-3 Male
600-04-BLK	-4 Male
600-06-BLK	-6 Male
600-08-BLK	-8 Male

MICRO SERIES - HOSE TAIL	
BLACK	SIZE
600-505-BLK	5/16" Tail
600-506-BLK	3/8" Tail

MICRO SERIES - REPLACEMENT DISC	
PART NO.	SIZE
CFS600-044	25mm OD - 44 micron
CFS600-074	25mm OD - 74 micron

INLINE FILTERS - 601 SHORT SERIES

The 601 Short Series is a solution for applications that are tight on space, but still requiring high flow with a serviceable stainless element. This compact size measures 1.75" OD (45mm) with a body length of 3.00" (76mm) plus the fitting length. Machined from quality 6061-T6 aluminium and hard anodised for maximum protection and laser engraved with the Speedflow logo! The element has a 21.31 sq inch area available in 4 micron sizes.



601 SHORT SERIES	
BLACK	SIZE
601-010-06-BLK	-6 Short Series 10µ
601-040-06-BLK	-6 Short Series 40µ
601-065-06-BLK	-6 Short Series 65µ
601-100-06-BLK	-6 Short Series 100µ

601 SHORT SERIES	
BLACK	SIZE
601-010-08-BLK	-8 Short Series 10µ
601-040-08-BLK	-8 Short Series 40µ
601-065-08-BLK	-8 Short Series 65µ
601-100-08-BLK	-8 Short Series 100µ

601 SHORT SERIES	
BLACK	SIZE
601-010-10-BLK	-10 Short Series 10µ
601-040-10-BLK	-10 Short Series 40µ
601-065-10-BLK	-10 Short Series 65µ
601-100-10-BLK	-10 Short Series 100µ

601 SHORT SERIES	
BLACK	SIZE
601-010-12-BLK	-12 Short Series 10µ
601-040-12-BLK	-12 Short Series 40µ
601-065-12-BLK	-12 Short Series 65µ
601-100-12-BLK	-12 Short Series 100µ

INLINE FILTERS - 601 METRIC & CHECK VALVE SERIES

The 601 Short Series are also available with M12 inlet or M18 outlet ends making it suitable for applications such as aftermarket fuel pumps. We have also integrated our check valves into the inlet side of our filter range to make this a multi purpose unit to save space and fittings. Available in -6, -8 and M12 x 1.5 metric to suit aftermarket fuel pumps. A great space saver for those tight situations. Add your required micron size to the part number, filters come complete ready to run!



METRIC SERIES - M12 INLET	
BLACK	SIZE
601-***-M1206-BLK	M12 x 1.5 to -6 Male
601-***-M1208-BLK	M12 x 1.5 to -8 Male
601-***-M1210-BLK	M12 x 1.5 to -10 Male
601-***-M1212-BLK	M12 x 1.5 to -12 Male

METRIC SERIES M18 OUTLET	
BLACK	SIZE
601-***-M1806-BLK	M18 x 1.5 to -6 Male
601-***-M1808-BLK	M18 x 1.5 to -8 Male
601-***-M1810-BLK	M18 x 1.5 to -10 Male
601-***-M1812-BLK	M18 x 1.5 to -12 Male

CHECK VALVE SERIES	
BLACK	SIZE
601-***-61006-BLK	-6 Check Valve to -6 Male
601-***-61008-BLK	-8 Check Valve to -8 Male
601-***-61206-BLK	M12 x 1.5 Check Valve to -6
601-***-61208-BLK	M12 x 1.5 Check Valve to -8

***Add the required micron size to the part number.

INLINE FILTERS - 602 LONG SERIES

The 602 Long Series is the big brother of our 601 Series, measuring 1.75" OD (45mm) with a body length of 5.00" (127mm) plus the fitting length. These have an element area of 44.7 square inches (288.4cm²) with a choice of 4 micron sizes. Machined from quality 6061-T6 aluminium and hard anodised for maximum protection and laser engraved with the Speedflow logo!



602 LONG SERIES	
BLACK	SIZE
602-010-06-BLK	-6 Long Series 10µ
602-040-06-BLK	-6 Long Series 40µ
602-065-06-BLK	-6 Long Series 65µ
602-100-06-BLK	-6 Long Series 100µ

602 LONG SERIES	
BLACK	SIZE
602-010-08-BLK	-8 Long Series 10µ
602-040-08-BLK	-8 Long Series 40µ
602-065-08-BLK	-8 Long Series 65µ
602-100-08-BLK	-8 Long Series 100µ

602 LONG SERIES	
BLACK	SIZE
602-010-10-BLK	-10 Long Series 10µ
602-040-10-BLK	-10 Long Series 40µ
602-065-10-BLK	-10 Long Series 65µ
602-100-10-BLK	-10 Long Series 100µ

602 LONG SERIES	
BLACK	SIZE
602-010-12-BLK	-12 Long Series 10µ
602-040-12-BLK	-12 Long Series 40µ
602-065-12-BLK	-12 Long Series 65µ
602-100-12-BLK	-12 Long Series 100µ

INLINE FILTERS - 602 METRIC SERIES

The 602 Long Series are also available with M12 inlet or M18 outlet ends along with our check valve series making it suitable for applications such as aftermarket fuel pumps. A great space saver for those tight situations. Add your required micron size to the part number, filters come complete ready to run!



METRIC SERIES M12 INLET	
BLACK	SIZE
602-***-M1206-BLK	M12 x 1.5 to -6 Male
602-***-M1208-BLK	M12 x 1.5 to -8 Male
602-***-M1210-BLK	M12 x 1.5 to -10 Male
602-***-M1212-BLK	M12 x 1.5 to -12 Male

METRIC SERIES M18 OUTLET	
BLACK	SIZE
602-***-M1806-BLK	M18 x 1.5 to -6 Male
602-***-M1808-BLK	M18 x 1.5 to -8 Male
602-***-M1810-BLK	M18 x 1.5 to -10 Male
602-***-M1812-BLK	M18 x 1.5 to -12 Male

CHECK VALVE SERIES	
BLACK	SIZE
602-***-61006-BLK	-6 Check Valve to -6 Male
602-***-61008-BLK	-8 Check Valve to -8 Male
602-***-61206-BLK	M12 x 1.5 Check Valve to -6
602-***-61208-BLK	M12 x 1.5 Check Valve to -8

***Add the required micron size to the part number.



601-602 SERIES FILTER BRACKET		
PART NO.	SIZE	COLOUR
602-500-BLK	Suit 1.75" (45mm) OD Body	Black
602-500-NAT	Suit 1.75" (45mm) OD Body	Natural

Custom anodised filters, Speedflow offers a custom anodising and engraving service. Contact your local dealer for more information.

INLINE FILTERS

INDIVIDUAL FILTER COMPONENTS

We now offer all of our filter components as separate part numbers. This is perfect for resellers as you do not have to carry all the part numbers of filters, so you can reduce your stock holdings and build filters as you require them, so you never miss out on that sale.



REPLACEMENT ELEMENTS - 602 SERIES

BLACK	SIZE	SIZE	COLOUR
CFS602-010	1.125" OD x 3.94" Long	10 Micron	Green
CFS602-040	1.125" OD x 3.94" Long	40 Micron	Red
CFS602-065	1.125" OD x 3.94" Long	65 Micron	Blue
CFS602-100	1.125" OD x 3.94" Long	100 Micron	Black



REPLACEMENT ELEMENTS - 601 SERIES

BLACK	SIZE	MICRON	COLOUR
CFS601-010	1.125" OD x 1.95" Long	10 Micron	Green
CFS601-040	1.125" OD x 1.95" Long	40 Micron	Red
CFS601-065	1.125" OD x 1.95" Long	65 Micron	Blue
CFS601-100	1.125" OD x 1.95" Long	100 Micron	Black



FILTER BARREL - SHORT

FILTER BARREL - LONG

M12 END CAP - INLET

M18 END CAP - OUTLET

PART NO.	DESCRIPTION
C601-B-BLK	601 Series Filter Body

PART NO.	DESCRIPTION
C602-B-BLK	602 Series Filter Body

PART NO.	DESCRIPTION
C601-M12M-FE-BLK	M18 End Cap

PART NO.	DESCRIPTION
C601-M18M-OE-BLK	M18 End Cap



AN END CAP - INLET

AN END CAP - OUTLET

END CAP O-RINGS

FILTER BRACKET

PART NO.	DESCRIPTION
C601-06M-FE-BLK	-6 End Cap - In
C601-08M-FE-BLK	-8 End Cap - In
C601-10M-FE-BLK	-10 End Cap - In
C601-12M-FE-BLK	-12 End Cap - In

PART NO.	DESCRIPTION
C601-06M-OE-BLK	-6 End Cap - Out
C601-08M-OE-BLK	-8 End Cap - Out
C601-10M-OE-BLK	-10 End Cap - Out
C601-12M-OE-BLK	-12 End Cap - Out

PART NO.	DESCRIPTION
COB-220	O-Ring - Nitrile
COV-220	O-Ring - Viton

PART NO.	COLOUR
602-500-BLK	Black
602-500-NAT	Natural

We have redesigned the inlet caps with locating fingers for the element so that a spring is no longer required. Some old stock is still available which may be supplied with a spring.

Nitrile - Use for Methanol
Viton - Unleaded Fuels & E10/E85



Rod Harvey
Australia's first 5 Second & World's Quickest Sport Compact
Speedflow 550 Series Light Weight Hose & Fittings

Joe Gaudi - Pro Radial
Speedflow 550 Series Light Weight Hose & Fittings

INLINE FILTERS - 603 MEGA SERIES

The 603 Mega Series is the newest addition to our filter range, measuring 2.48" OD (63mm) with a body length of 6.95" (177mm) plus the fitting length. These have an element area of 100.6 square inches (649cm²) with a choice of 2 micron sizes. Our new unique end cap design locates the filter element without the need for a spring to hold it in place. Machined from quality 6061-T6 aluminium and hard anodised for maximum protection and laser engraved with the Speedflow logo! Designed to be used for inline Fuel and Oil applications.



NEW SIZE

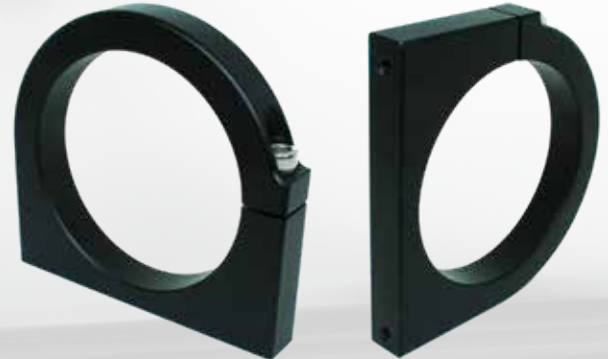
603 MEGA SERIES - MALE

BLACK	SIZE
603-045-10-BLK	-10 Male - Mega Series 45µ Inline Filter
603-100-10-BLK	-10 Male - Mega Series 100µ Inline Filter
603-045-12-BLK	-12 Male - Mega Series 45µ Inline Filter
603-100-12-BLK	-12 Male - Mega Series 100µ Inline Filter
603-045-16-BLK	-16 Male - Mega Series 45µ Inline Filter
603-100-16-BLK	-16 Male - Mega Series 100µ Inline Filter

603 MEGA SERIES -12 FEMALE PORT

BLACK	SIZE
603-045-12P-BLK	-12 Female Port - Mega Series 45µ Filter
603-100-12P-BLK	-12 Female Port - Mega Series 100µ Filter

This filter has -12 Female O-Ring Ports which allows our 920 Series adapters to be used to adapt to -6,-8,-10, -12 or -16.



603 MEGA SERIES - M12 SENSOR PORT

BLACK	SIZE
603-045-PM1212-BLK	-12 Male w/M12x1.5 Port to -12 Mega Series 45µ Filter
603-100-PM1212-BLK	-12 Male w/M12x1.5 Port to -12 Mega Series 100µ Filter

M12 sensor port is located on the inlet end cap of the filter.
Can be plugged off using 814-M12 or adapted to 1/8"NPT with 912-M12-02.

603 SERIES FILTER BRACKET

PART NO.	SIZE	COLOUR
603-500-BLK	Suit 2.48" (63mm) OD Body	Black

INLINE FILTERS - SCAVENGE FILTERS

Speedflow manufactures these coarse screen filters that are designed to be placed on scavenge lines to protect the dry sump pump from debris during a major engine failure. We offer the scavenge filters in a variety of sizes and options.



INLINE SCAVENGE FILTERS

BLUE	BLACK	SIZE
609-00-10	609-00-10-BLK	-10
609-00-12	609-00-12-BLK	-12
609-00-16	609-00-16-BLK	-16

90° SCAVENGE FILTER

BLUE	BLACK	SIZE
609-90-12	609-90-12-BLK	-12

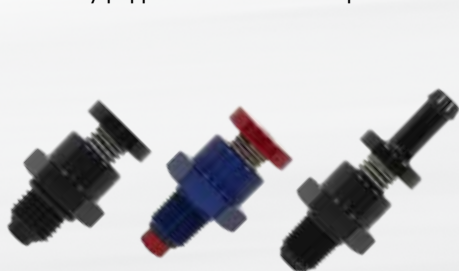
FILTERED SUMP ADAPTERS

BLUE	BLACK	SIZE	PORT
920-10-12-FS	920-10-12-FS-BLK	-10	-12
920-12-FS	920-12-FS-BLK	-12	-12
920-16-12-FS	920-16-12-FS-BLK	-16	-12

ALUMINIUM ADAPTERS

CHECK VALVES, BLOWER RELIEF & TURBO ADAPTERS

Speedflow has been manufacturing quality valves for over 25 years which have evolved into the quality parts we now have available. Our redesigned one way poppet valves have been proven to be very popular in every aspect of the performance industry!



BLOWER RELIEF VALVES		
RED/BLUE	BLACK	THREAD
620-02	620-02-BLK	1/8"NPT
620-04	620-04-BLK	7/16"-20
620-504	620-504-BLK	1/8"NPT

These can be screwed into a Supercharger gear case or other applications that require pressure to be released.

We also offer the 620-504 with a 1/4" tail that is perfect for Fuel Sampling.



NON-RETURN VALVE - INLINE		
BLUE	BLACK	SIZE
-	610-03-BLK	-3
-	610-04-BLK	-4
610-06	610-06-BLK	-6
610-08	610-08-BLK	-8
610-10	610-10-BLK	-10
610-12	610-12-BLK	-12

Speedflow's unique one-way valves were designed with a high performance vehicles in mind. They have a spring loaded high flow poppet valve that seals securely to positively stop fluid from returning!



FUEL PUMP NON-RETURN VALVE			
BLUE/BLACK	BLACK	INLET	OUTLET
612-06	612-06-BLK	M12 x 1.5	-6
612-08	612-08-BLK	M12 x 1.5	-8

Screw directly into Fuel Pumps with a M12 x 1.5 thread to hold line pressure and make starting easier!



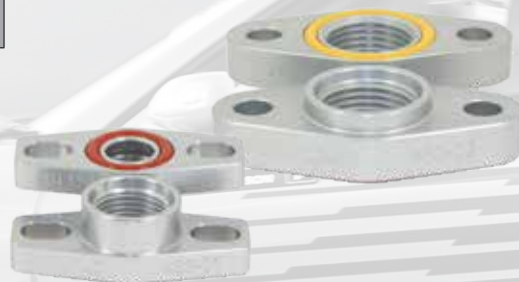
ROLL OVER VALVE		
BLUE	BLACK	SIZE
613-12	613-12-BLK	-12

We have manufactured a universal roll over valve that utilises a -12 Male thread with a -8 female thread and a stainless steel ball. This can be used with our 990-12 weld on or a 924-12 bulkhead nut with a choice of outlet from our 920 series adapters.



TANK VENT / ROLL OVER VALVE		
BLUE	BLACK	SIZE
613-06	613-06-BLK	-6

3/8" In-tank vent / roll over valve has a spring-loaded ball to prevent overflow on filling. The spring can be removed if you prefer the ball to act purely as a free flow roll over valve. The top can be replaced with a 920 Series adapter if a hose is required to be used from the valve.



TURBOCHARGER ADAPTERS			
PART NO.	PORT	HOLE CENTRES	SUIT
463-01	-8	Slotted 38-44mm	Universal
463-02	-10	50.8mm	T3-T4
463-03	-10	52.4mm	Precision

These are hard anodised and include a silicone sealing O-ring.

ALUMINIUM BALL VALVES

We have manufactured our own range of aluminium ball valves, these are lightweight, beautifully machined and anodised in our Taree facility. Available in three body sizes and a range of sizes to suit many applications including fuel, oil water and air.



XS BODY BALL VALVES		
BLACK	SIZE	BALL ID
650-02-BLK	1/8"NPT Female	-4
650-03-BLK	-3 Male	-4
650-04-BLK	-4 Male	-4



SMALL BODY BALL VALVES			
BLUE	BLACK	SIZE	BALL ID
650-06	650-06-BLK	-6 Male	-8
650-08	650-08-BLK	-8 Male	-8



LARGE BODY BALL VALVES			
BLUE	BLACK	SIZE	BALL ID
650-10	650-10-BLK	-10 Male	-12
650-12	650-12-BLK	-12 Male	-12

The Speedflow ball valves are now available and incorporate a panel mount option as standard with the ability to connect a cable to the handle. Constructed from 6061 aluminium body, handle, adapters and ball with a stainless steel drive spindle and machined Teflon® seals. The XS Body ball valves utilize a stainless ball suitable for all automotive fluids. These compact, high quality units that will perform in a high performance environment as expected from all Speedflow Products!

RECOMMENDED FUEL HOSE! 200 SERIES HOSE & HOSE ENDS



200 SERIES TEFLON® BRAIDED HOSE

Speedflow 200 Series Teflon® Braided Hose is constructed from a PTFE (Teflon®) inner tube compatible with all brake & clutch fluids, oil & fuels. The outer stainless steel braided cover adds fire and heat resistance and gives the hose a high pressure rating. Sizes -6 and up are manufactured with an anti-static PTFE tube suitable for use as main fuel lines. 200 Series has been an industry standard since the mid 60's when it was first used as brake lines to reduce expansion and provide a much firmer "pedal" and more consistent braking. Since then this hose has evolved to be recommended in clutch, pressure lines, turbo lines oil, water and fuel systems!

Temperature Range: -70°C (-94°F) to 260°C (500°F).

SIZE	PART NO.	INSIDE DIA.		OUTSIDE DIA.		OPERATING PRESS.		BURST PRESS.		WEIGHT		BEND RADIUS	
		INCH	MM	INCH	MM	PSI	BAR	PSI	BAR	KG/M	LB/FT	INCH	MM
-3	200-03	0.125	3.18	0.250	6.35	4250	290	12750	870	0.060	0.040	1.50	38.10
-4	200-04	0.188	4.78	0.312	7.92	4110	280	12350	840	0.075	0.050	2.00	50.80
-6	200-06	0.313	7.95	0.466	11.84	3380	230	10140	690	0.135	0.090	4.00	101.60
-8	200-08	0.415	10.54	0.526	13.35	2790	190	8380	570	0.149	0.100	5.25	133.40
-10	200-10	0.535	13.60	0.655	16.64	2200	150	6610	450	0.210	0.140	6.50	165.10
-12	200-12	0.625	15.88	0.860	21.84	1885	130	5655	390	0.280	0.188	8.00	203.30

INDUSTRY FIRST BLACK STAINLESS BRAIDED HOSE

200 SERIES TEFLON® BLACK STAINLESS BRAIDED HOSE

We now offer our popular 200 Series hose with a BLACK STAINLESS STEEL finish, in sizes -3 to -10. This is the identical hose to our 200 Series except we process in 5m lengths to change the outer braid from silver to BLACK! We supply from the factory in 5 metre lengths.

Temperature Range: -70°C (-94°F) to 260°C (500°F).

SIZE	PART NO.	LENGTH		INSIDE DIA.		OUTSIDE DIA.		OPERATING PRESS.		BURST PRESS.		BEND RADIUS	
		FEET	METRE	INCH	MM	INCH	MM	PSI	BAR	PSI	BAR	INCH	MM
-3	200-03-BLK-5M	16.4	5.0	0.125	3.18	0.250	6.35	4250	290	12750	870	1.50	38.10
-4	200-04-BLK-5M	16.4	5.0	0.188	4.78	0.312	7.92	4110	280	12350	840	2.00	50.80
-6	200-06-BLK-5M	16.4	5.0	0.313	7.95	0.466	11.84	3380	230	10140	690	4.00	101.60
-8	200-08-BLK-5M	16.4	5.0	0.415	10.54	0.526	13.35	2790	190	8380	570	5.25	133.40
-10	200-10-BLK-5M	16.4	5.0	0.535	13.60	0.655	16.64	2200	150	6610	450	8.00	203.30



200 SERIES TEFLON® BRAIDED HOSE WITH PVC COVER

Speedflow also offers our 200 Series Teflon® Braided Hose with a PVC cover. This abrasion resistant cover will stop the braid rubbing against other hoses, chassis or vehicle components and makes cleaning easier. Available in -3 with a Clear cover and -3 through -12 with a Gloss Black PVC cover.

Temperature Range: -70°C (-94°F) to 260°C (500°F).

SIZE	PART NO.	INSIDE DIA.		OUTSIDE DIA.		OPERATING PRESS.		BURST PRESS.		WEIGHT		BEND RADIUS	
		INCH	MM	INCH	MM	PSI	BAR	PSI	BAR	KG/M	LB/FT	INCH	MM
-3	200-03-C	0.125	3.18	0.295	7.49	4250	290	12750	870	0.070	0.047	1.50	38.10
-3	200-C03-BLK	0.125	3.18	0.295	7.49	4250	290	12750	870	0.070	0.047	1.50	38.10
-4	200-C04-BLK	0.188	4.78	0.366	9.30	4110	280	12350	840	0.085	0.057	2.00	50.80
-6	200-C06-BLK	0.313	7.95	0.500	12.70	3380	230	10140	690	0.155	0.104	4.00	101.60
-8	200-C08-BLK	0.415	10.54	0.594	15.09	2790	190	8380	570	0.170	0.115	5.25	133.40
-10	200-C10-BLK	0.535	13.60	0.740	18.80	2200	150	6610	450	0.230	0.154	6.50	165.10
-12	200-C12-BLK	0.625	15.88	0.860	21.84	1885	130	5655	390	0.300	0.201	8.00	203.30

200 SERIES HOSE ENDS

200 SERIES ALUMINIUM HOSE ENDS

Speedflow also manufactures a range of aluminium hose ends to suit the 200 Series hose for those who are conscious of weight. The aluminium range comes standard in black anodised. Our Blue/Black combination is also available along with custom anodising upon request.



STRAIGHT HOSE ENDS	
BLACK	SIZE
201-03-BLK	-3
201-04-BLK	-4
201-06-BLK	-6
201-08-BLK	-8
201-10-BLK	-10
201-12-BLK	-12



30° HOSE ENDS	
BLACK	SIZE
207-04-BLK	-4
207-06-BLK	-6
207-08-BLK	-8
207-10-BLK	-10
207-12-BLK	-12



45° HOSE ENDS	
BLACK	SIZE
202-03-BLK	-3
202-04-BLK	-4
202-06-BLK	-6
202-08-BLK	-8
202-10-BLK	-10
202-12-BLK	-12



60° HOSE ENDS	
BLACK	SIZE
208-04-BLK	-4
208-06-BLK	-6
208-08-BLK	-8
208-10-BLK	-10
208-12-BLK	-12



90° HOSE ENDS	
BLACK	SIZE
203-03-BLK	-3
203-04-BLK	-4
203-06-BLK	-6
203-08-BLK	-8
203-10-BLK	-10
203-12-BLK	-12



120° HOSE ENDS	
BLACK	SIZE
204-04-BLK	-4
204-06-BLK	-6
204-08-BLK	-8
204-10-BLK	-10
204-12-BLK	-12



150° HOSE ENDS	
BLACK	SIZE
205-04-BLK	-4
205-06-BLK	-6
205-08-BLK	-8
205-10-BLK	-10
205-12-BLK	-12



180° HOSE ENDS	
BLACK	SIZE
206-04-BLK	-4
206-06-BLK	-6
206-08-BLK	-8
206-10-BLK	-10
206-12-BLK	-12



OUR BLUE/BLACK COMBINATION IS STILL AVAILABLE, REPLACE -BLK WITH -D. SPEEDFLOW OFFERS A SPECIAL ORDER ANODISING SERVICE TO GIVE YOUR VEHICLE A COMPLETE CUSTOM LOOK! CALL FOR MORE INFO!



200 SERIES STEEL HOSE ENDS

Speedflow's steel hose ends are manufactured in all popular threads, styles and angles to accommodate any application. All of these fittings are plated using Electroless Nickel process, which gives a uniform coating that provides a high degree of corrosion resistance and a bright finish that is appealing to the eye!



STRAIGHT HOSE ENDS	
PART NO.	SIZE
201-03	-3
201-04	-4



STEPPED HOSE END		
PART NO.	NUT	HOSE
201-04-03	-4	-3



45° HOSE ENDS	
PART NO.	SIZE
202-03	-3
202-04	-4



90° HOSE ENDS	
PART NO.	SIZE
203-03	-3
203-04	-4



90° STEPPED HOSE END		
PART NO.	NUT	HOSE
203-04-03	-4	-3

200 SERIES HOSE ENDS

200 SERIES FEMALE & MALE ADAPTER HOSE ENDS

Speedflow's range of 200 Series Hose Ends include a huge selection of brake, clutch and special purpose hose ends in a variety of threads in both Metric and Imperial to suit all American, European, Japanese and Asian vehicles!



MALE BULKHEAD		
PART NO.	HOSE SIZE	THREAD
220-03	-3	3/8"-24
221-03	-3	M10 x 1.0
222-03	-3	M10 x 1.25
223-04	-4	7/16"-20
224-04	-4	1/2"-20



MALE - DUAL SEAT		
PART NO.	HOSE SIZE	THREAD
250-03	-3	3/8"-24
251-03	-3	M10 x 1.0
253-03	-3	7/16"-20
Washer Seal and Inverted Seat.		



MALE - MULTI SEAT		
PART NO.	HOSE SIZE	THREAD
252-03	-3	M10 x 1.25
254-04	-4	M12 x 1.0
Washer Seal, Inverted and Convex Seat.		



LIFE SAVERS		
PART NO.	HOSE SIZE	TUBE OD
260-03	-3	3/16"
260-04	-4	1/4"
These handy fittings are designed to be braised to a tube to adapt to a hose.		



FEMALE - CONCAVE SEAT		
PART NO.	HOSE SIZE	THREAD
241-03	-3	M10 x 1.0
Short body with Small O.D. Can be used with Bosch sensors with 45° Seat for remote mounting		



FEMALE - CONCAVE SEAT		
PART NO.	HOSE SIZE	THREAD
240-03	-3	M10 x 1.0
243-03	-3	M10 x 1.25
244-04	-4	M12 x 1.25
Long body with C-Clip Groove.		



FEMALE - CONCAVE SEAT			
PART NO.	SIZE	THREAD	OD
242-03	-3	3/8"-24	5/8"-26
Long body with 5/8"-26 Threaded O.D.			



FEMALE - CONCAVE SEAT		
PART NO.	HOSE SIZE	THREAD
242-03-BN	-3	3/8"-24
Designed to accept 3/8" Bleed Nipple for remote bleeding of Clutch or Brake systems.		



FEMALE - INVERTED SEAT		
PART NO.	HOSE SIZE	THREAD
230-03	-3	3/8"-24
231-03	-3	M10 x 1.0
232-03	-3	M10 x 1.25
Short body with C-Clip Groove.		



FEMALE - INVERTED SEAT		
PART NO.	HOSE SIZE	THREAD
235-04	-4	M12 x 1.0
Long body with C-Clip Groove.		



FEMALE - INVERTED SEAT			
PART NO.	SIZE	THREAD	OD
233-03	-3	7/16"-24	5/8"-18
233-04	-4	7/16"-24	5/8"-18
234-04	-4	7/16"-20	5/8"-26
Long body with Threaded O.D.			



FEMALE SWIVEL- INVERTED SEAT		
PART NO.	SIZE	THREAD
270-03-BLK	-3	M12 x 1.5
273-03-BLK	-3	1/8"BSPP
273-03-04-BLK	-3	1/4"BSPP
270 is Black anodised Aluminium. 273 is Red & Black anodised Aluminium.		



90° FEMALE - INVERTED SEAT		
PART NO.	HOSE SIZE	THREAD
271-03-BLK	-3	M12 x 1.5
Made from Black anodised Aluminium.		



FEMALE SWIVEL - FLAT SEAT		
PART NO.	HOSE SIZE	THREAD
272-03-BLK	-3	1/8"BSPP
Made from Red & Black anodised Aluminium.		



MALE NPT HOSE END		
PART NO.	SIZE	THREAD
274-03-M-S	-3	1/8"NPT
274-03-M-BLK	-3	1/8"NPT
Available in Steel or Black anodised Aluminium		



FEMALE NPT HOSE END		
PART NO.	SIZE	THREAD
274-03-F-S	-3	1/8"NPT
274-03-F-BLK	-3	1/8"NPT
Available in Steel or Black anodised Aluminium		



HOSE END TEE WITH BRACKET	
PART NO.	SIZE
261-03-S	-3 Steel
261-03-BLK	-3 Aluminium



HOSE END TEE WITH MALE	
PART NO.	SIZE
261-03-03-S	-3 Steel
261-03-03-BLK	-3 Aluminium



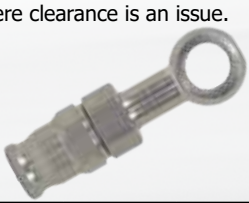
MALE TEE WITH BRACKET	
PART NO.	SIZE
325-03-S	-3 Steel
325-03-BLK	-3 Aluminium



200 SERIES BANJO'S & BOLTS

200 SERIES BANJO HOSE ENDS - STEEL & ALUMINIUM

We carry a full range of 200 Series Banjo Hose Ends in different sizes and angles. Used commonly in brake & Clutch systems to replace OEM style or where clearance is an issue.



STRAIGHT 8mm EYE		
PART NO.	SIZE	MATERIAL
209-03	-3	Steel

STRAIGHT 10mm (3/8") EYE		
PART NO.	SIZE	MATERIAL
210-03	-3	Steel
210-03-BLK	-3	Aluminium

DOUBLE 10mm (3/8") EYE		
PART NO.	SIZE	MATERIAL
210-03-03	-3	Steel

STRAIGHT 7/16" EYE		
PART NO.	SIZE	MATERIAL
213-03	-3	Steel
213-04	-4	Steel



30° BEND 10mm (3/8") EYE		
PART NO.	SIZE	MATERIAL
211-03	-3	Steel
211-03-BLK	-3	Aluminium

20° SIDE BEND 10mm EYE		
PART NO.	SIZE	MATERIAL
212-03	-3	Steel
212-03-BLK	-3	Aluminium

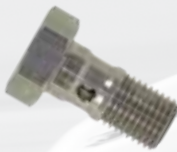
90° BEND 10mm (3/8") EYE		
PART NO.	SIZE	MATERIAL
219-03	-3	Steel
219-03-BLK	-3	Aluminium

-3 HOSE SUPPORT	
PART NO.	HOSE SIZE
296-03-BLK	-3

This hose support is made from aluminium and is designed to slide over -3 hose without PVC cover.

300 SERIES BANJO BOLTS

We carry a comprehensive range of banjo bolts to suit American, European & Japanese threads found in everything - from brakes to turbos and engine blocks. If you need a banjo bolt, we will have something to suit your application!



NEW SIZE

SINGLE BANJO BOLT - STEEL	
PART NO.	THREAD
300-03	3/8"-24
300-04	7/16"-20
300-05	7/16"-24
300-08	1/2"-20
303-03	1/8"BSPP

SINGLE BANJO BOLT - STEEL	
PART NO.	THREAD
301-02	M8 x 1.0
301-03	M10 x 1.0
302-03	M10 x 1.25
304-03	M10 x 1.5
301-04	M12 x 1.0
302-04	M12 x 1.25
304-04	M12 x 1.5

SINGLE BANJO BOLT - ALLOY	
PART NO.	THREAD
300-03-BLK	3/8"-24
301-03-BLK	M10 x 1.0
302-03-BLK	M10 x 1.25

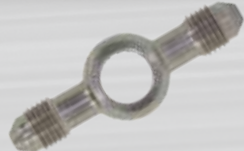
DBL BANJO BOLT - STEEL	
PART NO.	THREAD
305-03	3/8"-24
306-03	M10 x 1.0
307-03	M10 x 1.25
308-03	M10 x 1.5

DBL BANJO BOLT - ALLOY	
PART NO.	THREAD
305-03-BLK	3/8"-24
306-03-BLK	M10 x 1.0
307-03-BLK	M10 x 1.25

Check out our range of aluminium crush washers on page 47

310 SERIES BANJO TO MALE FLARE

We manufacture a large range of banjo adapters to give the flexibility of a banjo with a male to adapt to hose ends, female joiners or tube nuts.



10mm (3/8") EYE BANJO		
PART NO.	SIZE	MATERIAL
310-03	-3	Steel
310-03-BLK	-3	Aluminium
310-04	-4	Steel

10mm (3/8") EYE DBL BANJO		
PART NO.	SIZE	MATERIAL
310-03-03	-3 Double	Steel

7/16" EYE BANJO		
PART NO.	SIZE	MATERIAL
311-03	-3	Steel
311-04	-4	Steel

7/16" EYE BANJO WITH TAIL		
PART NO.	SIZE	MATERIAL
311-504	1/4" Tail	Steel



NEW 2020

1/2" EYE BANJO		
PART NO.	SIZE	MATERIAL
315-03	-3	Steel

12mm EYE BANJO		
PART NO.	SIZE	MATERIAL
314-03	-3	Steel
314-04	-4	Steel

14.5mm EYE BANJO		
PART NO.	SIZE	MATERIAL
720-04-S	-4	Steel
720-04	-4	Aluminium

200 SERIES ADAPTERS

200 SERIES MALE FLARE ADAPTERS

Speedflow manufactures a comprehensive range of adapters to suit their ever increasing range of hose ends! If you need to adapt a gauge, a calliper, clutch or brake master cylinder or any -3 & 4 application - we have what you need!



MALE INVERTED FLARE		
PART NO.	SIZE	THREAD
340-03	-3	3/8"-24
350-04 ¹	-4	3/8"-24
341-03	-3	7/16"-24
341-04	-4	7/16"-24

1: Dual Seal Adapter, Washer Seal or Inverted Seat

SPECIAL INVERTED FLARE		
PART NO.	SIZE	THREAD
341-03-03	-3	7/16"-24
342-03-03	-3	1/2"-20
343-03-03	-3	9/16"-18
348-03-03	-3	9/16"-20

MALE DUAL SEAT		
PART NO.	SIZE	THREAD
347-03	-3	3/8"-24
344-03	-3	M10 x 1.0
351-04 ²	-4	M10 x 1.0
345-03	-3	M10 x 1.25
346-03-03	-3	M12 x 1.0
357-04 ²	-4	M12 x 1.0

These are machined with a Convex and Inverted seat on the sealing surface.
2: Multi Seal Adapter, Washer Seal or Dual Seat

MALE CONVEX SEAT		
PART NO.	SIZE	THREAD
349-03-2-L	-3	M8 x 1.25



WASHER SEAL - METRIC		
PART NO.	SIZE	THREAD
349-03	-3	M8 x 1.0
349-03-2	-3	M8 x 1.25
351-03	-3	M10 x 1.0
352-03	-3	M10 x 1.25
356-03	-3	M10 x 1.5
359-03	-3	M12 x 1.5

WASHER SEAL - IMPERIAL		
PART NO.	SIZE	THREAD
350-03	-3	3/8"-24
353-03	-3	7/16"-20
355-03	-3	7/16"-24
354-03	-3	1/8"BSPP

MALE WASHER SEAL - ALLOY		
PART NO.	SIZE	THREAD
350-03-BLK	-3	3/8"-24
351-03-BLK	-3	M10 x 1.0
352-03-BLK	-3	M10 x 1.25

CLUTCH ADAPTERS	
PART NO.	SIZE
386-GM01-04-BLK	-4 Male
386-GM01-M10-BLK	M10 x 1.0 Female

349-04	-4	M8 x 1.0
351-04	-4	M10 x 1.0
352-04	-4	M10 x 1.25
356-04	-4	M10 x 1.5
357-04 ²	-4	M12 x 1.0
358-04	-4	M12 x 1.25
359-04	-4	M12 x 1.5

2: Multi Seal Adapter, Washer Seal or Dual Seat

1: Dual Seal Adapter, Washer Seal or Inverted Seat

Check out our range of aluminium crush washers on page 47



Steve Milliken - GSS Performance NZ



Photo courtesy of Phil Karjean



Speedflow are proud supporters of the Slaughter Motorsport Team in their quest to hold a World Land Speed Record!



Frank Marchese - Dandy Engines Australia's quickest street car!

200 SERIES ADAPTERS

200 SERIES MALE FLARE ADAPTERS

Speedflow manufactures a comprehensive range of adapters to suit their ever increasing range of hose ends! If you need to adapt a gauge, a calliper, clutch or brake master cylinder or any -3 & 4 application - we have what you need!



45° FEMALE - FEMALE - STEEL		
PART NO.	MATERIAL	SIZE
132-03-S	Steel	-3
132-03	Aluminium	-3
132-04	Aluminium	-4



90° FEMALE - FEMALE - STEEL		
PART NO.	MATERIAL	SIZE
133-03-S	Steel	-3
133-03	Aluminium	-3
133-04-S	Steel	-4
133-04	Aluminium	-4



45° FEMALE - MALE - STEEL		
PART NO.	MATERIAL	SIZE
142-03-S	Steel	-3
142-03	Aluminium	-3
142-04	Aluminium	-4



90° FEMALE - MALE		
PART NO.	MATERIAL	SIZE
143-03-S	Steel	-3
143-03	Aluminium	-3
143-04	Aluminium	-4



STR FEMALE - FEMALE - STEEL		
PART NO.	MATERIAL	SIZE
131-03-S	Steel	-3
131-03	Aluminium	-3
131-04	Aluminium	-4



FEMALE - MALE w/NPT PORT			
PART NO.	SIZE	NPT PORT	
140-03-S	-3 Steel	1/8"NPT	
140-03	-3 Alloy	1/8"NPT	
140-04-02-S	-4 Steel	1/8"NPT	
140-04	-4 Alloy	1/8"NPT	



FEMALE - MALE w/NPT PORT		
PART NO.	SIZE	NPT
140-04-04	-4	1/4"



FEMALE - MALE ADAPTER		
PART NO.	SIZE	NPT PORT
906-03-02-S	-3	1/8"NPT



MALE UNION	
PART NO.	SIZE
360-03	-3
360-04	-4
360-04-03	-4 to -3

NEW SIZE



MALE NPT ADAPTERS			
PART NO.	SIZE	MALE	
380-03-01	-3	1/16"NPT	
380-03	-3	1/8"NPT	
380-03-04	-3	1/4"NPT	
380-04-01	-4	1/16"NPT	
380-04	-4	1/8"NPT	



MALE BSPT ADAPTERS		
PART NO.	SIZE	MALE
381-03	-3	1/8"BSP
381-04	-4	1/8"BSP

NEW 2020



45° MALE NPT ADAPTERS		
PART NO.	SIZE	MALE
382-03	-3	1/8"NPT



90° MALE NPT ADAPTERS		
PART NO.	SIZE	MALE
383-03-01	-3	1/16"NPT
383-03	-3	1/8"NPT
383-04-01	-4	1/16"NPT
383-04	-4	1/8"NPT

NEW SIZE

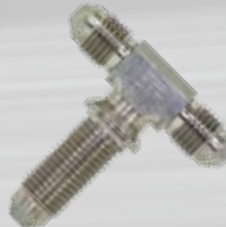


STRAIGHT BULKHEAD	
PART NO.	SIZE
320-03	-3
320-04	-4

NEW SIZE



90° BULKHEAD	
PART NO.	HOSE SIZE
323-03	-3
323-04	-4



BULKHEAD TEE	
PART NO.	SIZE
324-03	-3

NEW SIZE



BULKHEAD NUT	
PART NO.	SIZE
924-03-S	-3
924-04-S	-4



200 SERIES ADAPTERS

200 SERIES MALE FLARE ADAPTERS

Speedflow manufactures a comprehensive range of adapters to suit their ever increasing range of hose ends! If you need to adapt a gauge, a calliper, clutch or brake master cylinder or any -3 & 4 application - we have what you need!



GAUGE & SENDER ADAPTERS			
BLUE	BLACK	SIZE	NPT
370-03	370-03-BLK	-3	1/8"
370-04	370-04-BLK	-4	1/8"



90° GAUGE ADAPTERS			
BLUE	BLACK	SIZE	NPT
373-03	373-03-BLK	-3	1/8"
373-04	373-04-BLK	-4	1/8"



FEMALE TUBE NUT	
PART NO.	SIZE
390-03	-3 suit 3/16" Tube
390-04	-4 suit 1/4" Tube



-3 HOSE SUPPORT	
PART NO.	HOSE SIZE
296-03 BLK	-3

This hose support is made from aluminium and is designed to slide over -3 hose without PVC cover.



1/8" BSPT TO NPT ADAPTER			
BLUE	BLACK	FEM	MALE
370-02-02	370-02-02-BLK	NPT	BSPT

Designed to adapt 1/8"NPT Gauges & Senders to 1/8"BSPT threaded holes.



FEMALE - MALE LONG EXTENSION		
BLUE	BLACK	SIZE
372-02	372-02-BLK	1/8"NPT
38mm (1.5") Overall Length		



FEMALE - MALE SHORT EXTENSION		
BLUE	BLACK	SIZE
372-202	372-202-BLK	1/8"NPT
28mm (1.1") Overall Length		



See page 49 for installation instructions.

1mm RESTRICTOR	
PART NO.	HOSE SIZE
399-03	-3
399-04	-4



ENS STEEL SOCKETS	
PART NO.	HOSE SIZE
C2000-03	-3
C2000-04	-4



ALUMINIUM SOCKETS	
PART NO.	HOSE SIZE
C2000-03-BLK	-3
C2000-04-BLK	-4
C2000-06-BLK	-6
C2000-08-BLK	-8
C2000-10-BLK	-10
C2000-12-BLK	-12



REPLACEMENT OLIVES	
PART NO.	HOSE SIZE
299-03	-3
299-04	-4
299-06	-6
299-08	-8
299-10	-10
299-12	-12



Mick Brasher

FIRESLEEVE & TOOLS

FIRESLEEVE

Speedflow's Firesleeve is manufactured from high bulk braided fibreglass sleeving and coated with a custom compounded black silicone rubber to protect and extend the life of hoses, cables and wires by forming a protective barrier in areas of extreme heat. Speedflow has sized this to fit tightly over our hose but will fit other hoses with similar outside diameters. Each size is marked with the Speedflow name and a dash size for easy identification that can easily be removed for a clean look.



Continuous Operating Temperature: 260°C / 500°F
 Max short term exposure: 1300°C / 2370°F
 Outstanding Flexibility & Durability, Expandable for installation
 Colour: Shiny Black, Speedflow Size Identification

FIRESLEEVE

Part Number	Hose Size & Recommended Uses	Firesleeve I.D.
599-04-T	200-3, 200-4, Ignition Leads, Wiring	8mm / 5/16"
599-06	100-06, 200-08, 400-04, Wiring, Cables	12mm / 1/2"
599-08	100-8, 200-10, 400-06, Wiring, Cables	16mm / 5/8"
599-10	100-10, 400-08	19mm / 3/4"
599-12	100-12, 400-10	22mm / 7/8"
599-16	100-16, 400-12	25mm / 1"

HOSE CUTTERS & ACCESSORIES

We supply quality hose cutters to make a perfect cut plus assembly lube and our aluminium bar ends.



ASSEMBLY LUBRICANT

PART NO.	DESCRIPTION
SF-LUBE	Assembly Lube 125ml / 4.23 fl/oz

Speedflow's Assembly Lubricant is specifically formulated to lubricate aluminium and steel threads when assembling hose ends to performance hose.



ALUMINIUM BAR ENDS

PART NO.	DESCRIPTION
ALLOY	Aluminium Bar Ends per Kg.

If you need to make any small components, we have available 6061 aluminium bar ends. Sizes and lengths are random, sold by the kilogram.



200 SERIES HOSE CUTTERS

PART NO.	DESCRIPTION
432-03	Hose Cutter -3 & -4

The 200 Series cutter is a hand sized cutter that is designed to cut through -3 & -4 hose. Measures 8.25" (210mm) long with plastic grips.



400 SERIES HOSE CUTTERS

PART NO.	DESCRIPTION
433-12	Hose Cutter -4 to -12

The 400 Series cutter is a ratcheting action that slices straight through any rubber hose and leaves a square end, perfect for 400 Series Hose Ends!



HOSE CUTTERS

PART NO.	DESCRIPTION
432-12	Hose Cutter -3 to -20

We have sourced a new supplier for our hose cutters, this new design has a larger cutting area, longer aluminium handles with rubber grips. They are 32" (810mm) long and make cutting braided hose a breeze. Does not leave residue in the hose as found when cutting with a cut off blade or hacksaw.

TOOLS & ACCESSORIES

VICE JAWS & SPANNERS

At Speedflow we manufacture our own range of spanners & vice jaws to compliment our range of fittings.



SPEEDFLOW - SPANNER SETS	
PART NO.	DESCRIPTION
430-00	-6 to -12 Spanner Set (4 Spanners)



SPEEDFLOW - SPANNER SETS	
PART NO.	DESCRIPTION
430-01	-4 to -20 Complete Set (7 Spanners)



SPEEDFLOW - VICE JAWS	
PART NO.	DESCRIPTION
431-01	Aluminium Vice Jaw Set -3 to -10



SPEEDFLOW - ALUMINIUM SPANNERS			
PART NO.	COLOUR	SIZE	SPANNER SIZE
430-04	Natural*	-4	9/16"
430-06	Black*	-6	11/16"
430-08	Blue*	-8	7/8"
430-10	Red*	-10	1"
430-12	Green*	-12	1-1/4"
430-16	Violet*	-16	1-1/2"
430-20	Gold*	-20	1-13/16"



SPEEDFLOW - VICE JAWS	
PART NO.	DESCRIPTION
431-02	Aluminium Vice Jaw Set -8 to -20



SPEEDFLOW - FLAT VICE JAWS	
PART NO.	DESCRIPTION
431-04	Aluminium Vice Jaw Set Flat Face

Speedflow have years of research and development, using this knowledge they have designed their latest AN spanners with the customer in mind! These are made from 6061 grade aluminium giving them strength, with a shorter handle that makes the spanner more usable in tight spaces. They have radiused edges for comfort and are anodised in a variety of colours for a beautiful long lasting appearance.

We can custom anodise and engrave these to your requirements also, contact us for more information!

*Colours may vary due to the introduction of new dyes in our range.

WASHERS & O-RINGS

A comprehensive range of aluminium crush washers to suit our range of adapters, always replace sealing washers when servicing fittings. We have replacement Nitrile (NBR) and now Viton O-Rings to suit our O-Ring Port Adapters, Plugs and other AN sized fittings.



ALUMINIUM CRUSH WASHERS			
I.D	EACH	10 PACK	100 PACK
8mm - 5/16"	901-02	901-02-X	901-02-C
10mm - 3/8"	901-03	901-03-X	901-03-C
7/16"	901-04	901-04-X	901-04-C
12mm - 1/2"	901-05	901-05-X	901-05-C
1/4"BSPP	902-04	902-04-X	902-04-C
14mm - 9/16"	901-06	901-06-X	901-06-C
16mm - 3/8"BSPP	902-06	902-06-X	902-06-C
18mm	901-08	901-08-X	901-08-C
1/2"BSPP	902-08	902-08-X	902-08-C
22mm - 7/8"	901-10	901-10-X	901-10-C

O-RINGS			
I.D	SIZE	NITRILE (NBR)	VITON
3/8"	-3	905-03	905-03V
7/16"	-4	905-04	905-04V
9/16"	-6	905-06	905-06V
3/4"	-8	905-08	905-08V
7/8"	-10	905-10	905-10V
1-1/16"	-12	905-12	905-12V
1-5/16"	-16	905-16	905-16V
1-5/8"	-20	905-20	905-20V
1-11/16"	-24	905-24	905-24V
2-3/16"	-32	905-32	905-32V



TEFLON® WASHERS				
I.D	SIZE	EACH	10 PACK	100 PACK
7/16"	-4	903-04	903-04-X	903-04-C
9/16"	-6	903-06	903-06-X	903-06-C
3/4"	-8	903-08	903-08-X	903-08-C
7/8"	-10	903-10	903-10-X	903-10-C
1-1/16"	-12	903-12	903-12-X	903-12-C
1-5/16"	-16	903-16	903-16-X	903-16-C

Teflon® is a registered trademark of DuPont.

O-RINGS 10 & 100 PACKS	
10 PACK	100 PACK
Add -X	Add -C

MERCHANDISE

DECALS, BANNERS & T-SHIRTS

Check out our range of merchandise, that includes are decals, banners & flags, and T-shirts.



SPEEDFLOW CAPS

Baseball Caps in Black or Gray
Trucker Caps in Black or Red



SPEEDFLOW BANNER

PART NO.	DESCRIPTION
SF-FLAG-100	Fabric Flag 1200 x 700mm
SF-BANNER	Vinyl Banner 1200 x 700mm

Great for the shop, garage or race meetings!



SPEEDFLOW T-SHIRTS

PART NO.	DESCRIPTION
SF-Tee	T-Shirt S, M, L, XL, 2XL, 3XL

Hanes 6.2oz 100% Cotton T-Shirts.
Screen printed with SF logo on front and Speedflow
Hose & Fittings design on back.
Available now! Oxford Gray or Black



SPEEDFLOW DECALS

PART NO.	DESCRIPTION
We have a range of stickers available.	



Photo courtesy of Autobarn Bundaberg



Tom Parry



"We test Speedflow in the most extreme environment in motorsport, we are amazed at how their fittings survive! We could not ask for a better product to supply all the vital fluids to an 8000+hp engine!"

HOW TO ASSEMBLE 100 & 120 SERIES HOSE

One of the most commonly asked questions - how to assemble braided hose and fittings! Here are some simple steps to ensure you correctly assemble Speedflow fittings to 100 & 120 Series Hose.



Tools Required:

- 100 Series Cutters
- Tape
- Vice
- Vice Jaws
- Lubricant
- Open End Spanner



Step 1: Select the correct size hose for the fittings and measure the length. This can be easily cut using Speedflow's 100 Series cutters. Other acceptable means of cutting are: Fine tooth hacksaws, cut-off blades. Wrap the hose with tape and make sure the cut is square and any residue is trimmed and cleaned.



Step 2: Remove tape from the cut hose, remove the socket from the hose end and secure in a vice with Speedflow vice jaws. Insert the hose into the socket with a twisting pushing motion until the hose is just short of the socket threads.



Step 3: Take the socket and hose from the vice, install the hose end into the vice jaws and liberally coat the threads and centre nipple. Insert the hose on the centre nipple and engage the threads of the socket to the hose end - be careful not to cross thread! Hand tighten as far as possible.



Step 4: Using a correctly sized spanner, complete tightening until there is a gap between the socket and hose end is approx 1mm. Align the flats for a professional looking finish. Remove from the vice and repeat the process to complete the assembly.



Step 5: Inspect, clean and pressure test the hose, and you are now ready to install the assembly on your ride!

ASSEMBLY INSTRUCTIONS

HOW TO ASSEMBLE 200 SERIES HOSE

200 Series hose ends are made up of three components; the main body, the socket and aluminium olive. Check out these simple instructions to easily assemble our Speedflow 200 Series hose and fittings.



Tools Required:

- 200 Series Cutters
- Pliers
- Small Screwdriver
- Lubricant
- Vice
- Vice Jaws
- Open End Spanner



Step 1: Select the correct size hose for the fittings and measure to the desired length. This can be easily cut using Speedflow's 200 Series cutters. Other acceptable means of cutting are: Fine tooth hacksaws, cut-off blades. Make sure the cut is square and any residue is trimmed and cleaned.



Step 2: Ensure the hose is round by gently squeezing with pliers. At this stage, slide the hose end socket over the hose and insert the hose end to check the I.D. is round. Remove the hose end, take a small flat screwdriver and slowly separate the braid from the O.D. of the Teflon® tube. Take care not to damage the inner tube, you should aim to spread the braid so that the olive slips on easily.



Step 3: Take the olive and start the tapered end between the Teflon® and braid. It is very important not to get any strands of braid under the olive as this will cause leaks! Now push the olive into the hose against the side of your vice or a strong flat surface. Check that the inner tube is seated and square on the inside step of the olive.



Step 4: Place your vice jaws in a vice, secure the hose end and lubricate the threads with a touch of oil. Now push the hose over the hose end nipple, there will be slight resistance. Now slide the socket over the threads and start screwing this on by hand.



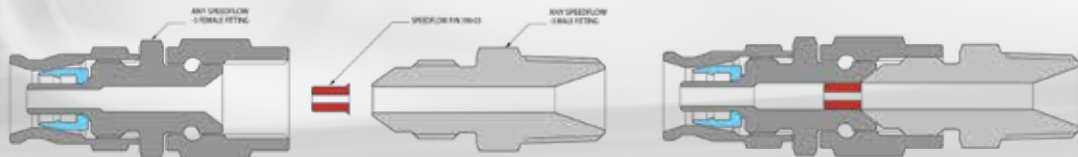
Step 5: Select the correct sized spanner for your job, check out our charts on the previous page. Tighten the socket on the hose end until there is a gap of approx 1mm. We recommend tightening to align the flats for a professional finish. Remove from the vice and repeat for the opposite end.



Step 6: Your completed hose is now ready to be installed on your vehicle, it is advised to clean, inspect and pressure test the assembly before using. Always replace the olive if repairing or maintaining a hose end.

399 SERIES RESTRICTOR INSTRUCTIONS

Check out the diagram and instructions below for the correct installation of our 399 Series restrictors into a -3 or -4 Hose End.



Step 1: Disconnect your hose end from the adapter, select the correct size restrictor, -3 (399-03), -4 (399-04)

Step 2: Take the restrictor and insert into the hose end until it seats. Take care that it does not fall out.

Step 3: Connect the hose end back to the adapter and tighten as per normal. The hose is now ready to use with the 1mm restrictor.

HOW TO ASSEMBLE 400 SERIES PUSHLOCK HOSE

400 Series hoses can be the easiest to assemble, just follow the instructions below for correct installation.



Step 1: Select the correct size hose for the fittings and measure to the desired length. This can be easily cut using Speedflow's 400 Series cutters. Other acceptable means of cutting are: Sharp knife or blade. Make sure the cut is square and any residue is trimmed and cleaned.



Step 2: Install the hose end in the vice jaws and secure. If you are assembling an angled fitting, use an adapter of the correct size in the vice jaws and screw the angled hose end to this, make sure it is tight. This allows you to use push the hose on without the hose end moving. Lubricate the tail, we use liquid soap as this will dry unlike oil or grease!



Step 3: Locate the hose on the end of the tail. With force push the hose. You will encounter resistance as the hose is pushed up the tail and over the barbs, try and do this in one motion until the hose is tight under the collar. The process can be made easier by sitting the hose in hot water for about 30 seconds before you start.



Step 3: Remove from the vice and repeat for the opposite end. Your completed hose is now ready to be installed on your vehicle, it is advised to clean, inspect and pressure test the assembly before using.

ASSEMBLY INSTRUCTIONS

HOW TO ASSEMBLE 490 SERIES POWER STEERING HOSE

490 Series hose and fittings use a simple tapered style fitting which can be easy to assemble, with the right tools and preparation. Here are a few tips and instructions below for correct installation.



- Tools Required:**
- 100 Series Cutters
 - Tapered Mandrel
 - Lubricant
 - Vice
 - Vice Jaws
 - Open End Spanner



Step 1: Cut the hose square with our 432-12 cutting tool. Other acceptable methods include a fine tooth hacksaw or cut-off blades. Make sure any residue is removed after cutting.



Step 2: Ensure the hose is round and then put the socket in the vice jaws and secure the vice. Insert the hose and screw anti-clockwise (left) until it bottoms out. Now turn the hose clockwise (right) quarter to half a turn to allow for hose expansion.



Step 3: Lubricate the threads of the socket and the hose end nipple and threads liberally. Use a heavy weight engine oil or Speedflow's assembly lube. This will ensure friction is reduced during assembly and helps prevent galling of the aluminium.



Step 4: Take the assembly out of the vice, replace with the mandrel and lubricate. Insert the tapered mandrel into the hose, this will ensure the hose is round and allow the hose end to start easier when the nipple is inserted.



Step 5: Tighten the socket in the vice, remove the mandrel and insert the hose end nipple and start the threads in a clockwise (right) motion. Select the correct sized spanner for your job, and continue to tighten the assembly until approx. a 1mm gap is left between the hose the socket and hose end.



Step 6: Your completed hose is now ready to be installed on your vehicle, it is advised to clean, inspect and pressure test the assembly before using.

HOW TO INSTALL FIRESLEEVE

Firesleeve is a snug fit over our hose, so pushing it over can sometimes be a problem. Check out the tips below for quick and easy installation.



Step 1: Select the correct size for hose to be sleeved. Cut the firesleeve to the correct length using a sharp knife or scissors. If you are installing the firesleeve onto a new hose assembly, make sure to put one hose end on, tape the other end of the hose and slide the cover over. Check out the next step for long lengths and assembled hoses.



Step 2: Sometimes the firesleeve can be tough to slide over a hose, maybe due to the length, attempting to install over hose ends or the diameter of the fire sleeve is slightly too small. The use of an air supply can solve these issues. Follow these simple tips to expand the firesleeve and easily slide it on. Firstly plug off the hose ends, and start the sleeve on one end.



Step 3: Now with the help of a friend, hold the hose and firesleeve tightly to trap air, and insert an air supply in the open end of the firesleeve and again hold closed. Gently open the air supply, this will expand the sleeve allowing you and your helper to push the hose into the firesleeve. Once the sleeve is most of the way the air supply can be inserted at the other end and repeated.



Step 3: Remove the air supply, if necessary assembly the remaining hose end and centre the firesleeve on the hose. The hose is now ready for installation, remember it is advised to clean, inspect and pressure test the assembly before using.



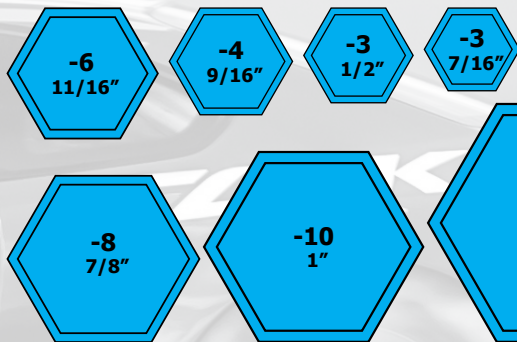
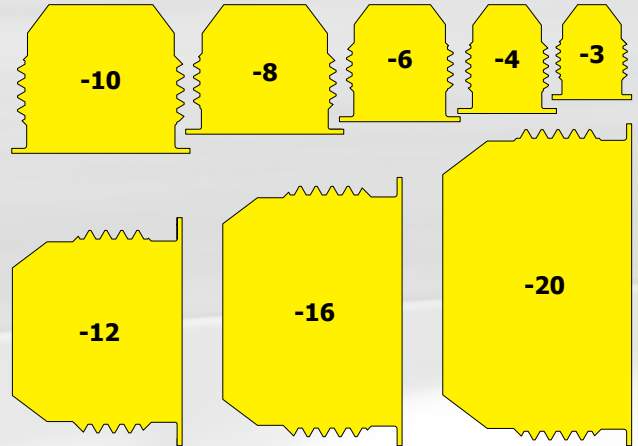
TECHNICAL INFORMATION

AN/JIC FITTING IDENTIFICATION CHART

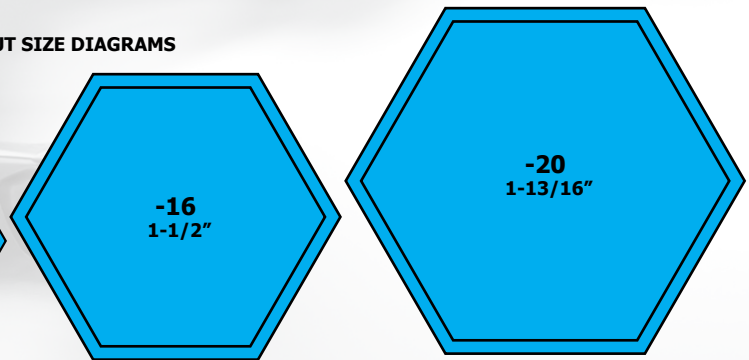
Speedflow's hose and fittings sizes are primarily based on the AN/JIC imperial system. Dash sizes relate to hose or tube sizes in 1/16" increments. The drawings below depict actual sizes of our AN/JIC thread sizes shown in the appropriate dash number. Listed in the chart below all the relevant data relating to AN/JIC threads and diagrams for the B-Nut or Wire Nut sizes.

MALE AN/JIC THREAD DIAGRAMS

AN/JIC FITTING & TUBE INFORMATION					
DASH SIZE	BRAIDED HOSE I.D.	HARD TUBE O.D.	AN/JIC THREAD	AN FLARE BORE SIZE	AN/JIC WIRE NUT HEX
-3	1/8"	3/16"	3/8" x 24	0.125"	7/16" or 1/2"
-4	7/32"	1/4"	7/16" x 20	0.171"	9/16"
-6	11/32"	3/8"	9/16" x 18	0.298"	11/16"
-8	7/16"	1/2"	3/4" x 16	0.391"	7/8"
-10	9/16"	5/8"	7/8" x 14	0.484"	1"
-12	11/16"	3/4"	1-1/16" x 12	0.608"	1-1/4"
-16	7/8"	1"	1-5/16" x 12	0.844"	1-1/2"
-20	1-1/8"	1-1/4"	1-5/8" x 12	1.078"	1-13/16"



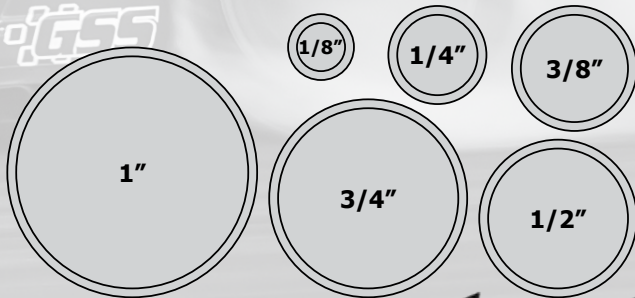
B-NUT SIZE DIAGRAMS



NPT & BSP FITTING IDENTIFICATION CHART

NPT & BSP sizes do not measure their given size. Use the diagrams below to determine the correct size. The chart below displays all information in regards to NPT, BSP & BSPP thread pitches and diameters.

NPT & BSP THREAD DIAGRAMS



NPT & BSP FITTING INFORMATION

NPT & BSP PART NO.	TAPER NPT	TAPER BSP	PARALLEL BSPP	APPROXIMATE O.D.
-02	1/8" x 27	1/8" x 28	1/8" x 28	0.38"
-04	1/4" x 18	1/4" x 19	1/4" x 19	0.52"
-06	3/8" x 18	3/8" x 19	3/8" x 19	0.66"
-08	1/2" x 14	1/2" x 14	1/2" x 14	0.83"
-10			5/8" x 14	0.89"
-12	3/4" x 14	3/4" x 14	3/4" x 14	1.04"
-16	1" x 11.5	1" x 11	1" x 11	1.31"
-20	1-1/4" x 11.5	1-1/4" x 11	1-1/4" x 11	1.65"



Charlotte, Georgia & Chanel Uefiting & Josh Maggs - Speedflow Jr Dragsters

**Check out our website for all
the latest news, products,
distributors and information!**



www.speedflow.com.au

Available from:



Follow us on Facebook



Proud Members of



Speedflow Products Pty Ltd

3-5 Coolabah Drive · Taree · NSW 2430 · Australia

Tel: +61 2 6552 6144 · Freecall 1800 242 918 · Fax: +61 2 6551 0253

www.speedflow.com.au · email: products@speedflow.com.au

ABN: 93 002 676 833